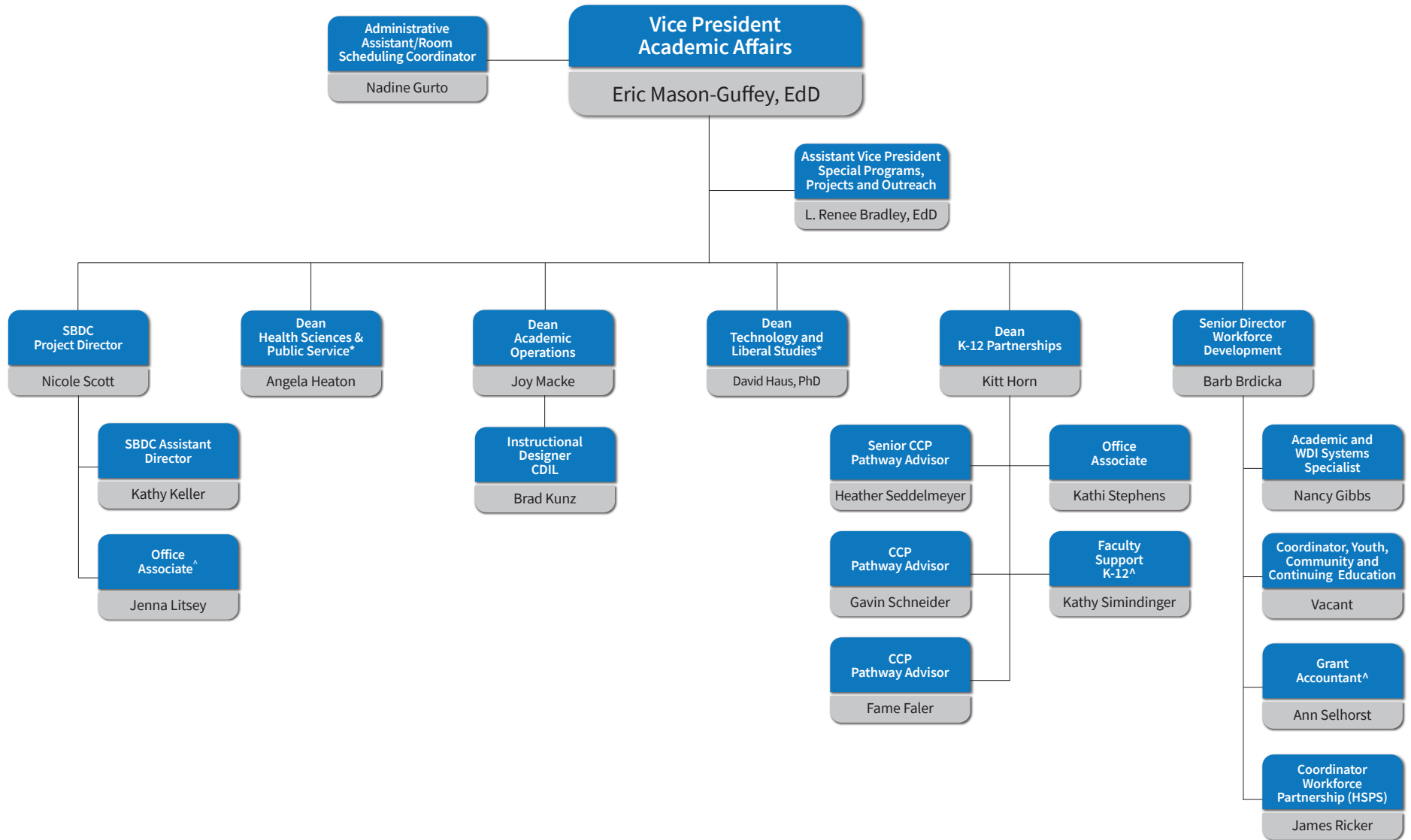


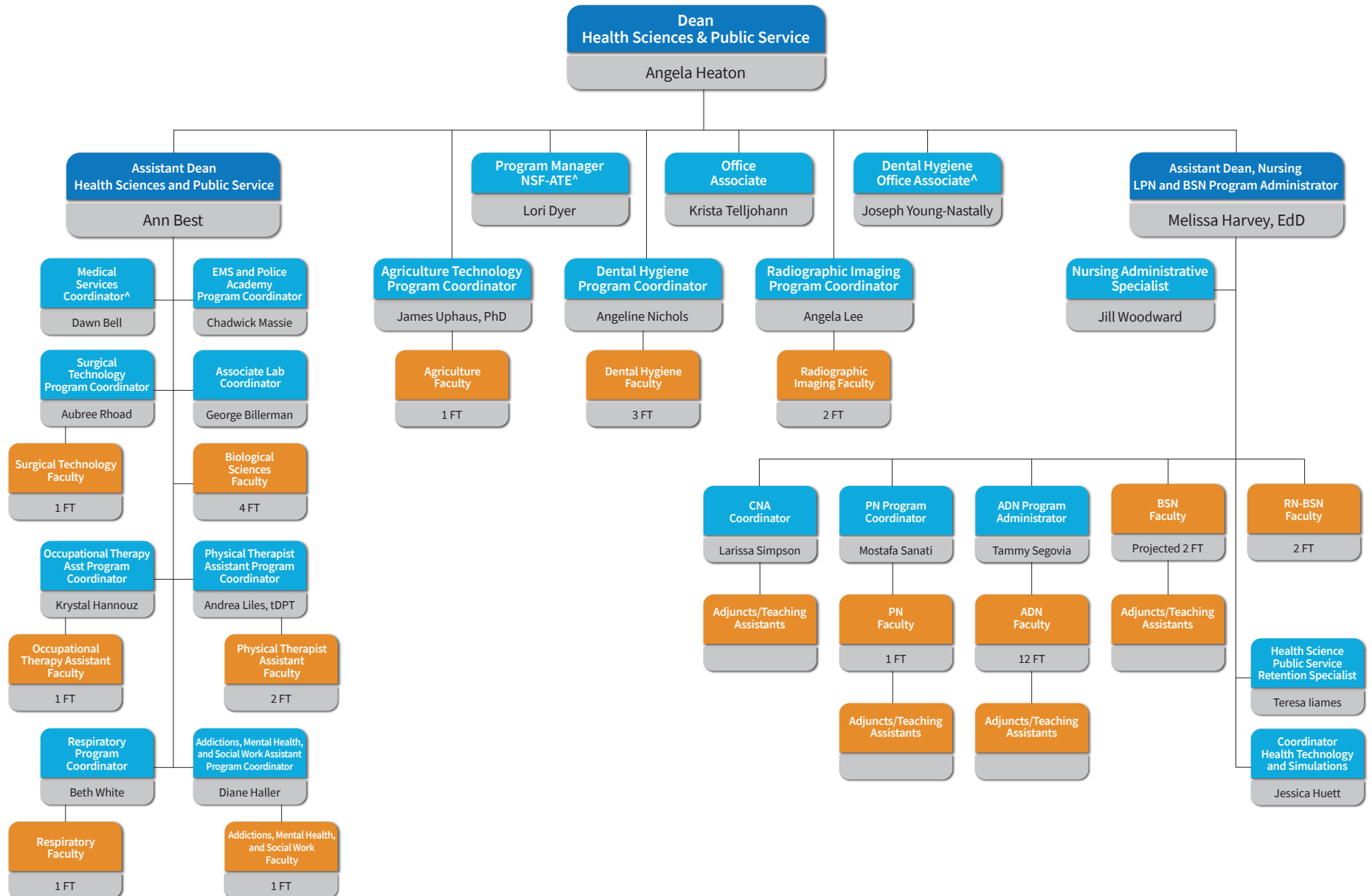
ACADEMIC AFFAIRS AND WORKFORCE DEVELOPMENT



^ Part-time

* See detailed
Division organizational chart

HEALTH SCIENCES AND PUBLIC SERVICE

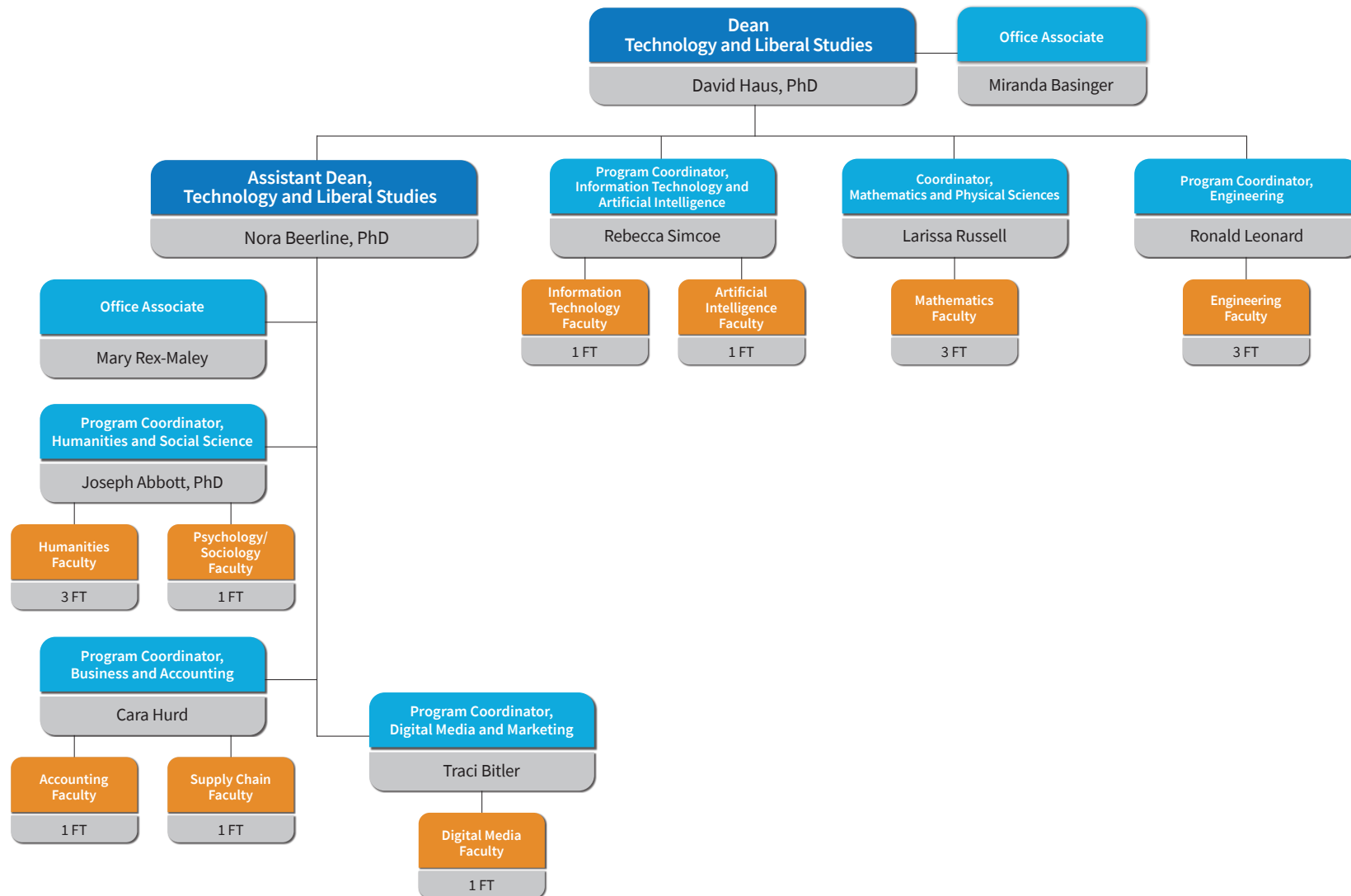


^ Part-time

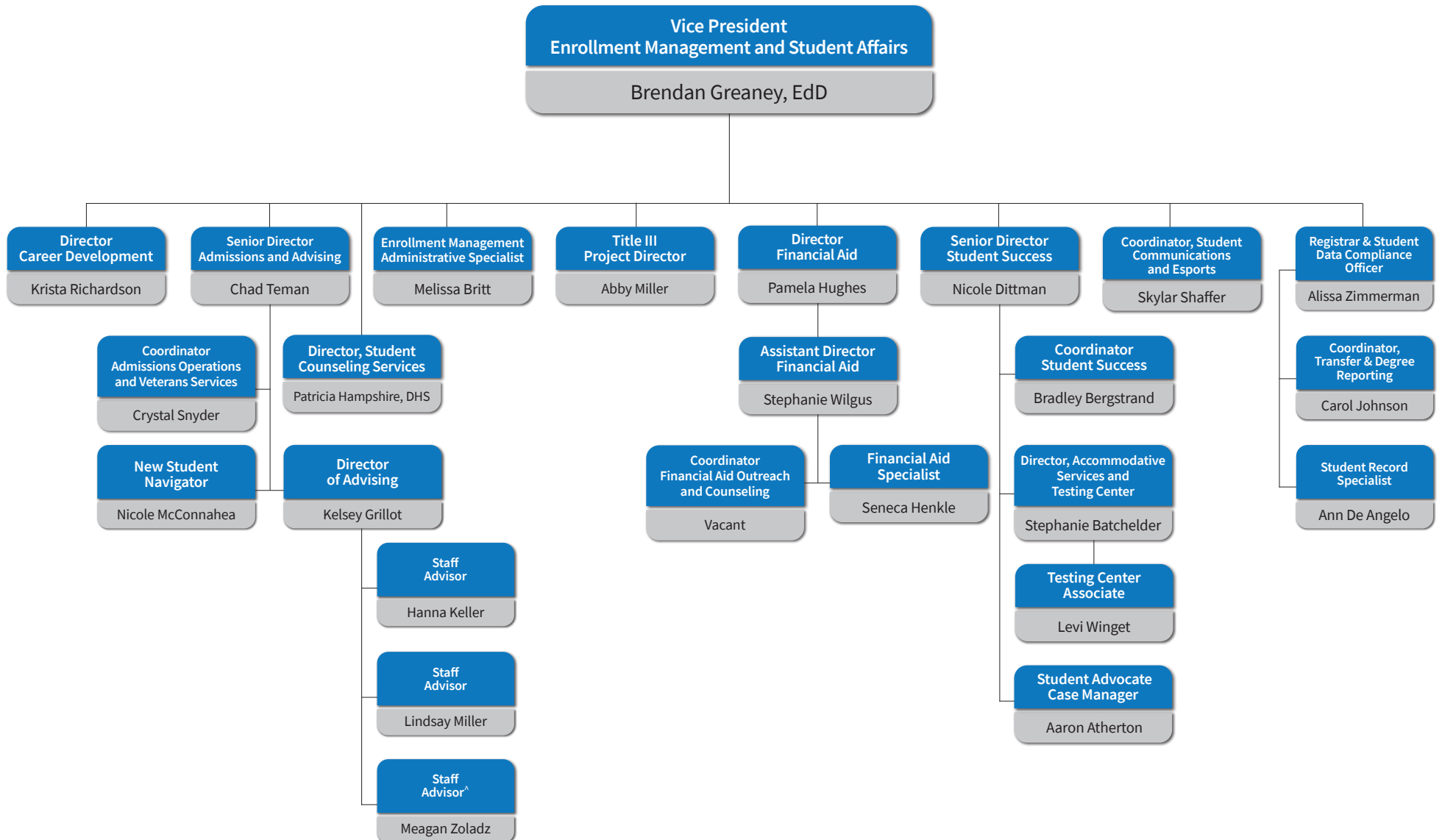
*See detailed Nursing Services organizational chart

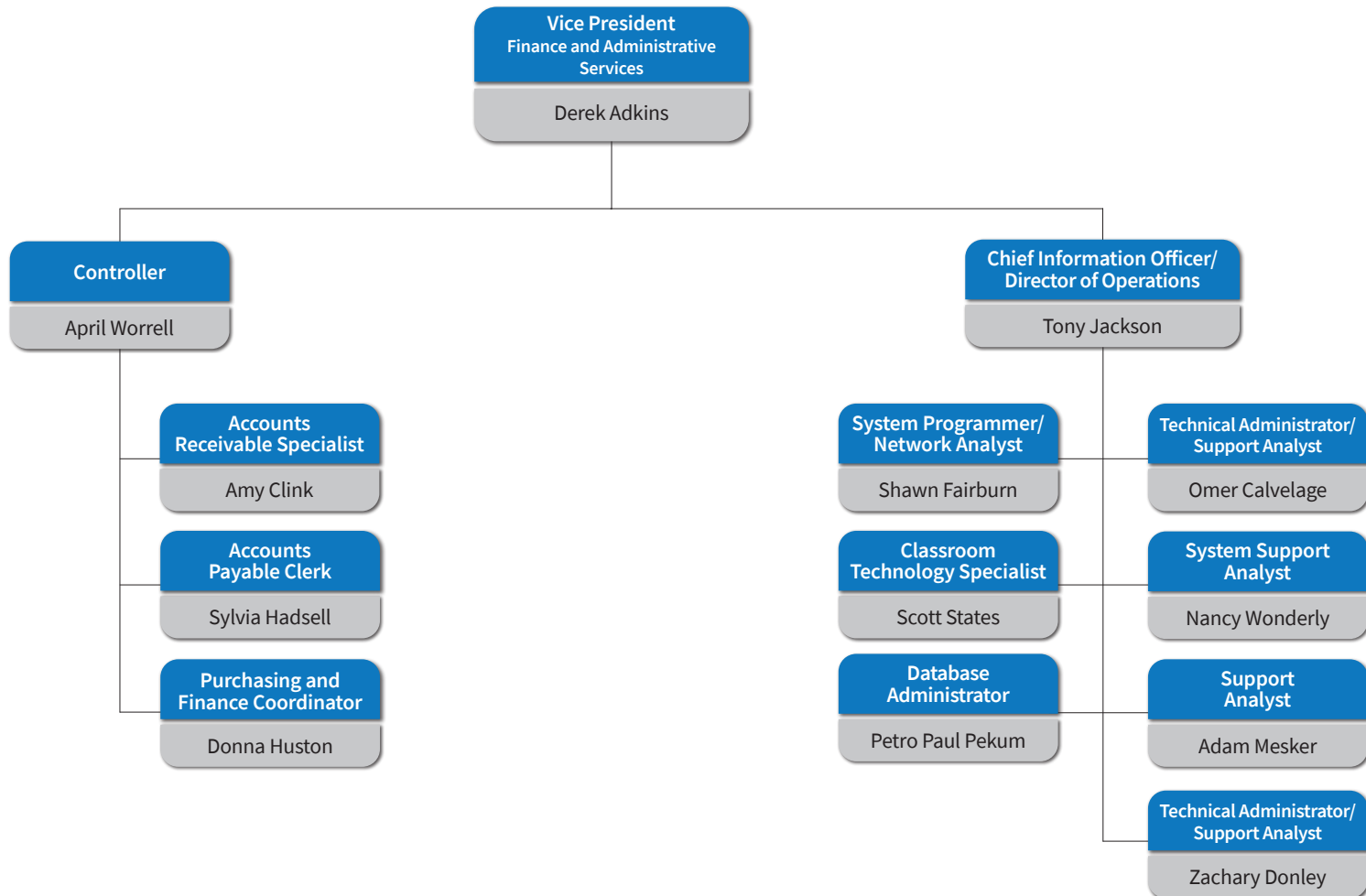
Updated 7/1/2025

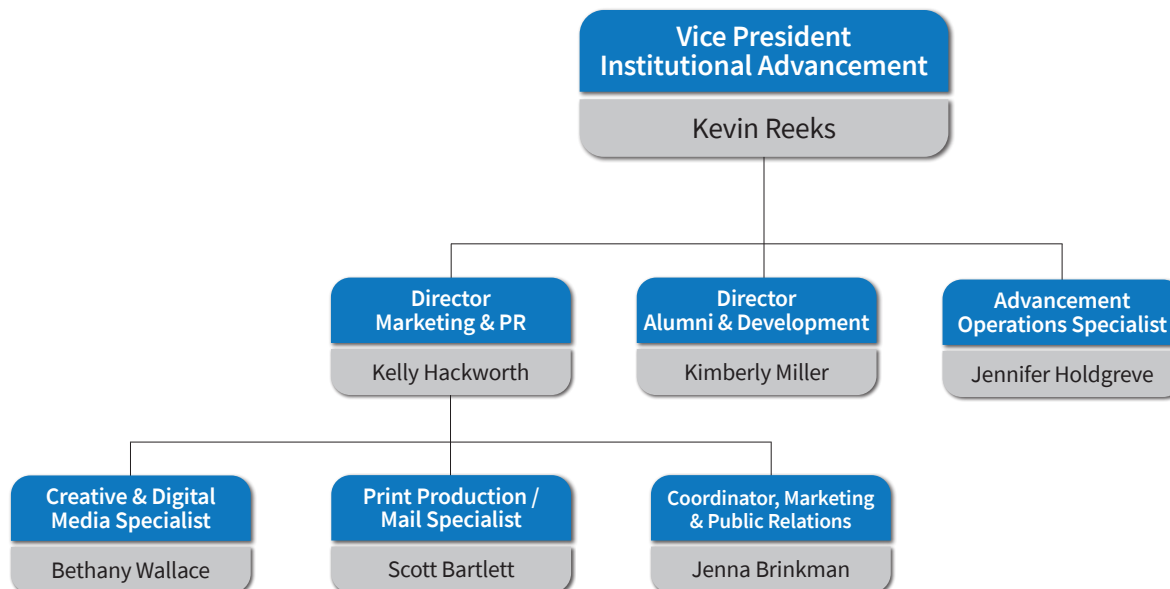
TECHNOLOGY AND LIBERAL STUDIES



ENROLLMENT MANAGEMENT AND STUDENT AFFAIRS







INSTITUTIONAL EFFECTIVENESS PLANNING

