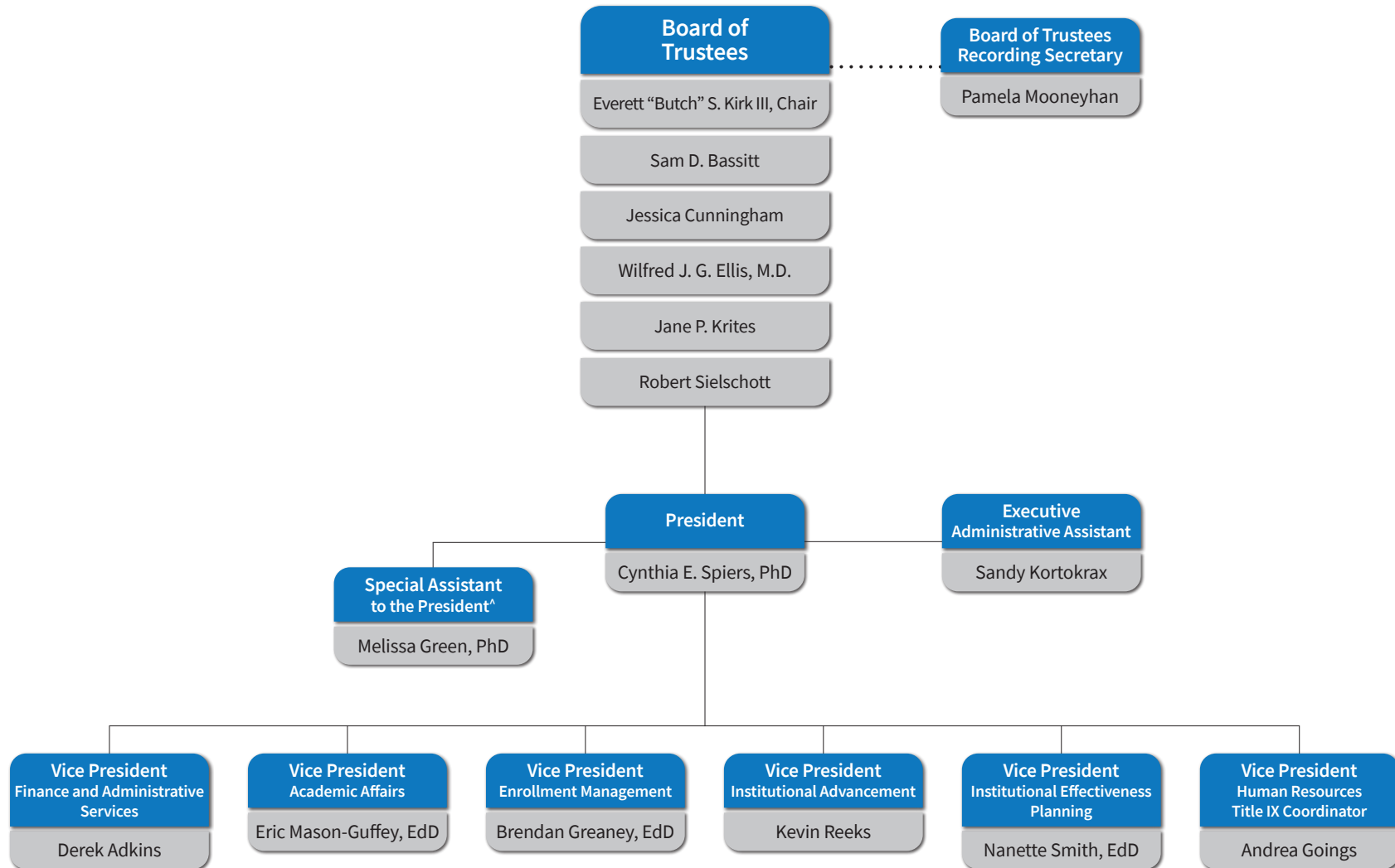
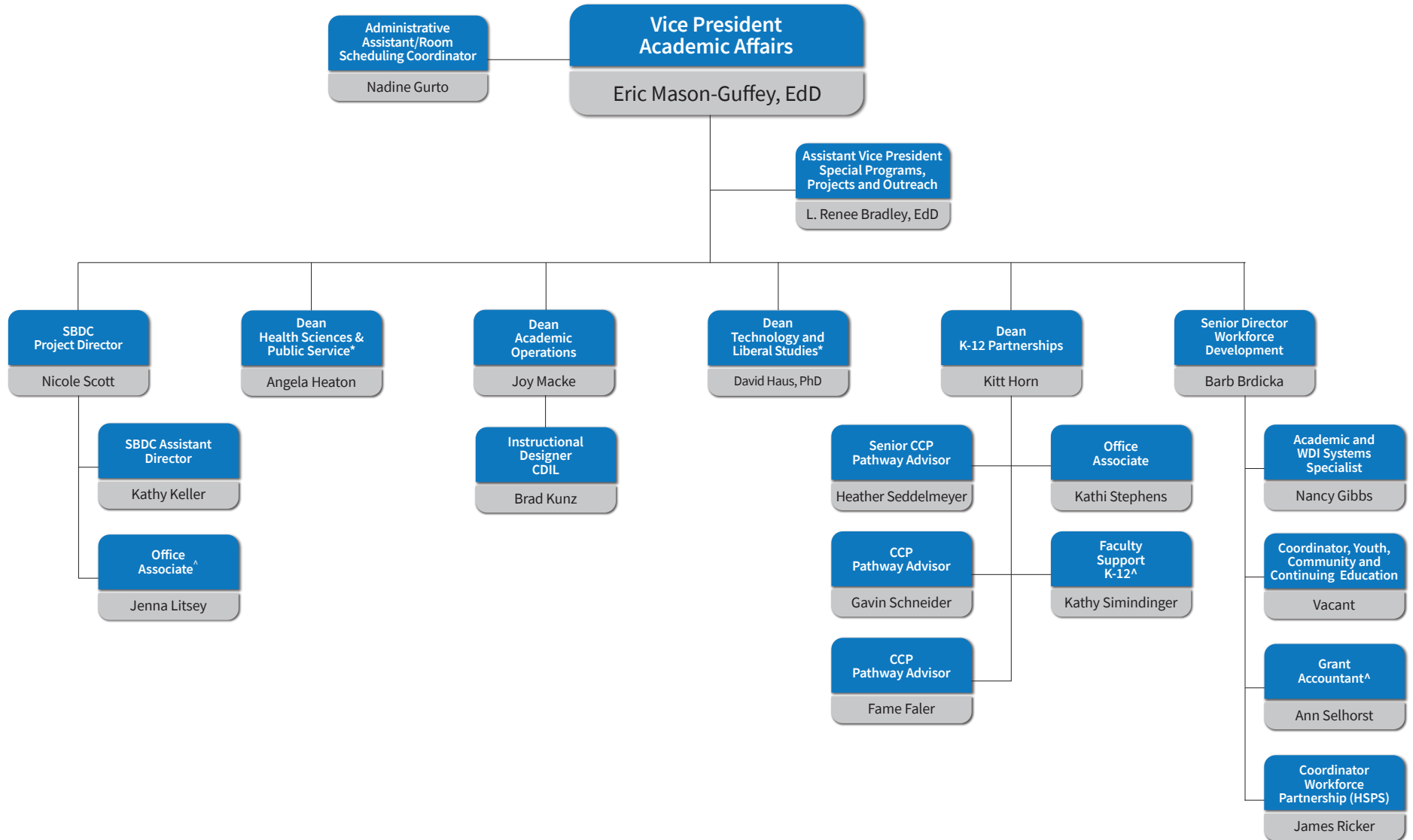


OFFICE OF THE PRESIDENT



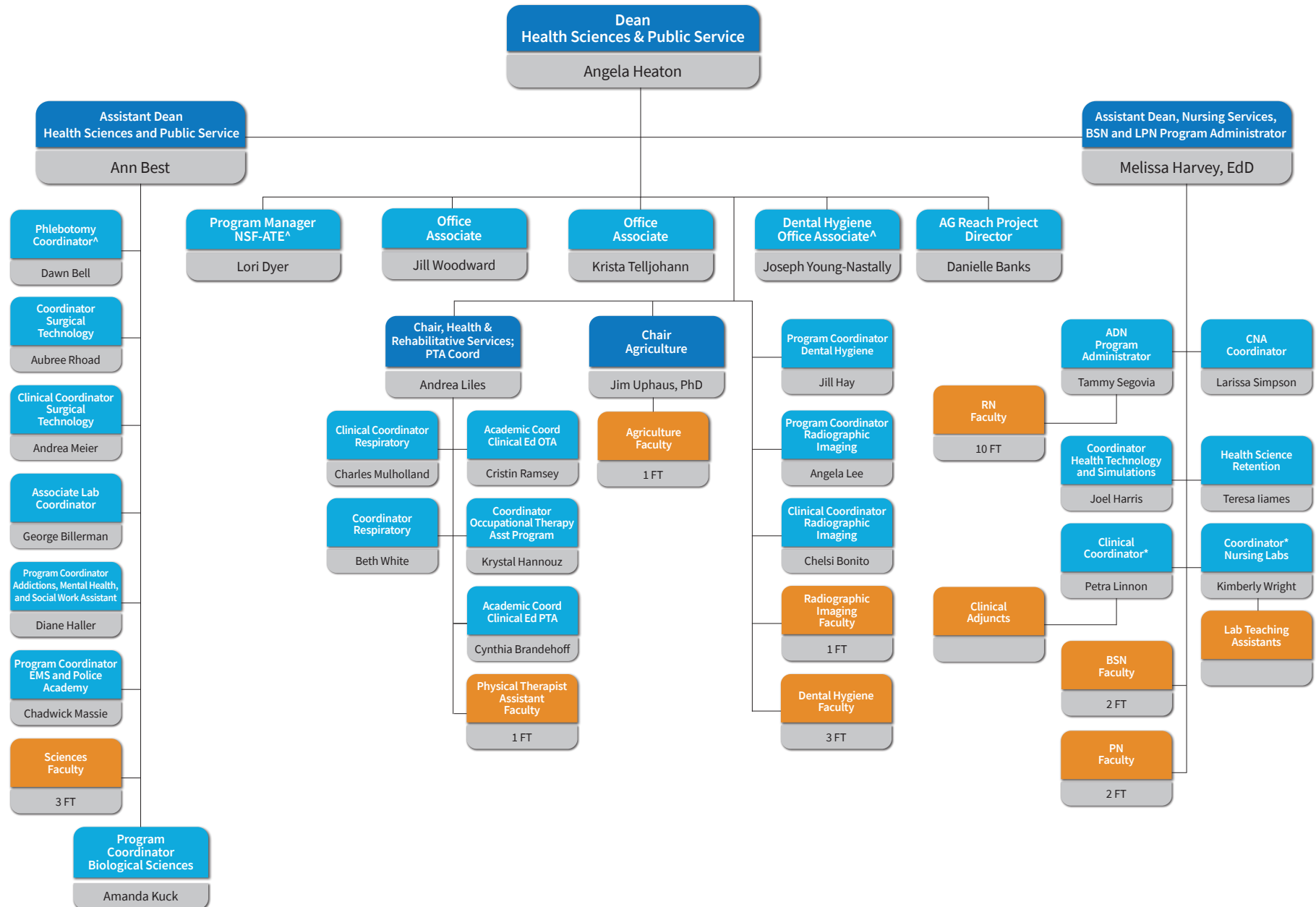
ACADEMIC AFFAIRS AND WORKFORCE DEVELOPMENT



^ Part-time

* See detailed
Division organizational chart

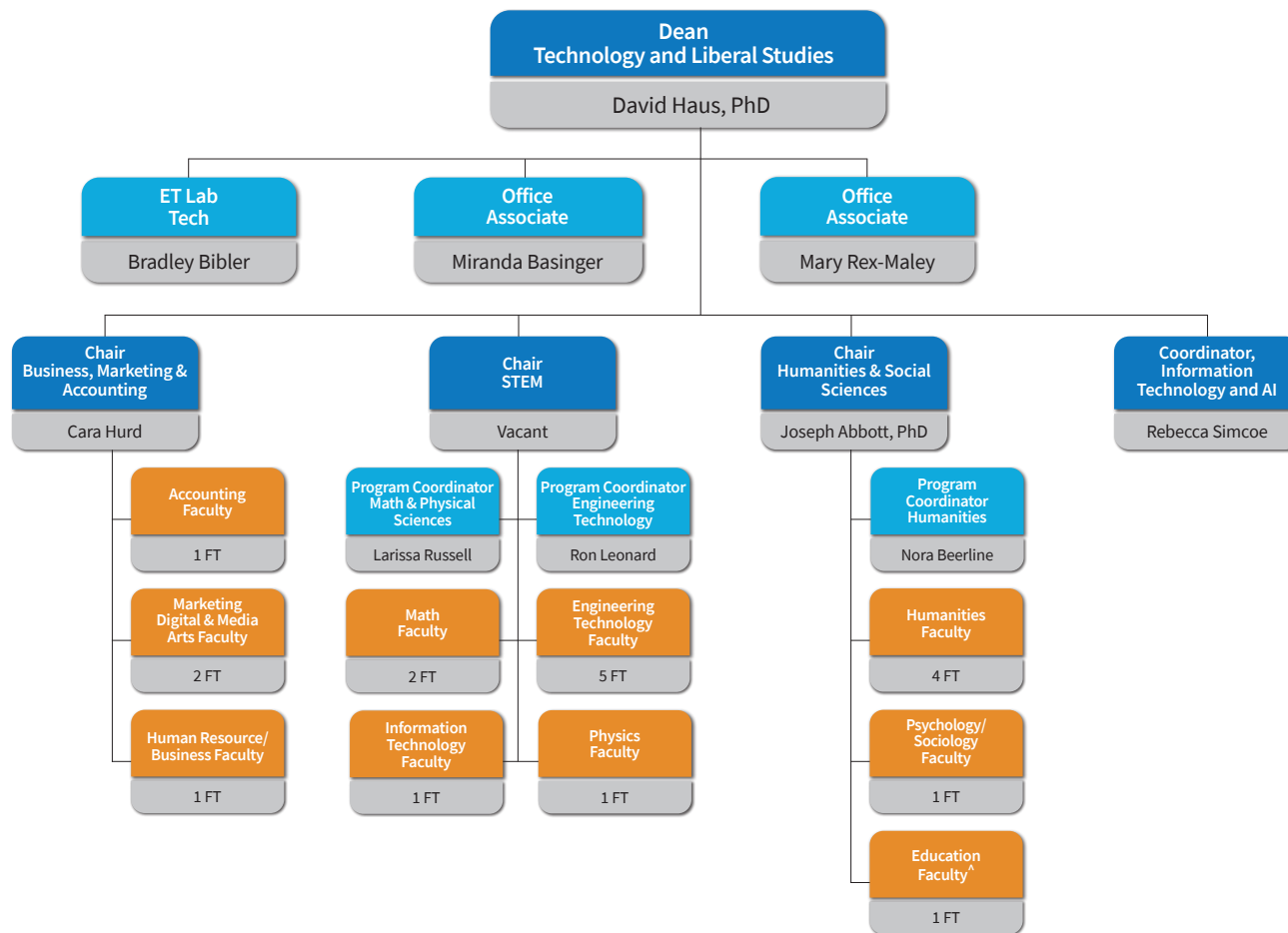
HEALTH SCIENCES AND PUBLIC SERVICE



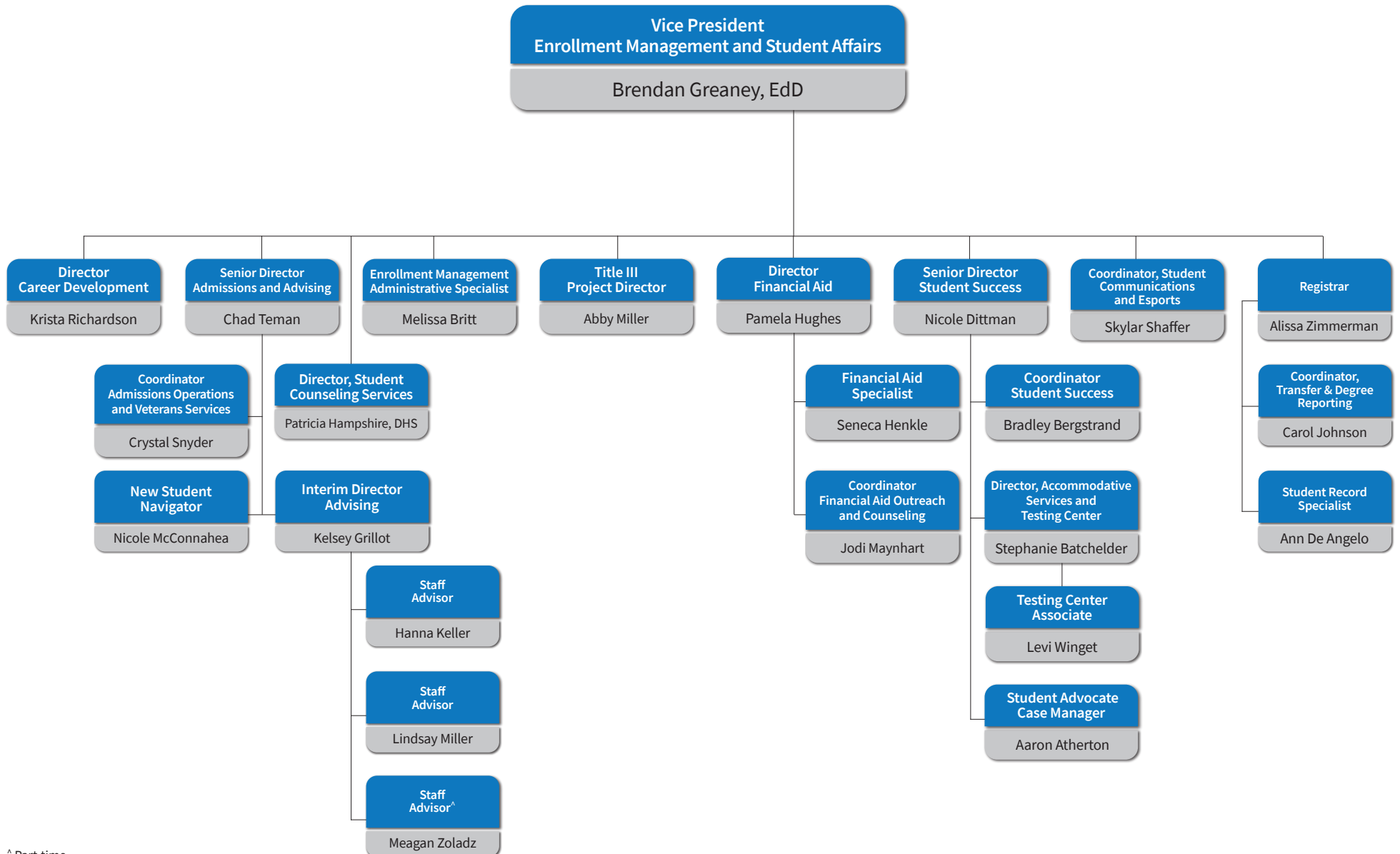
^ Part-time

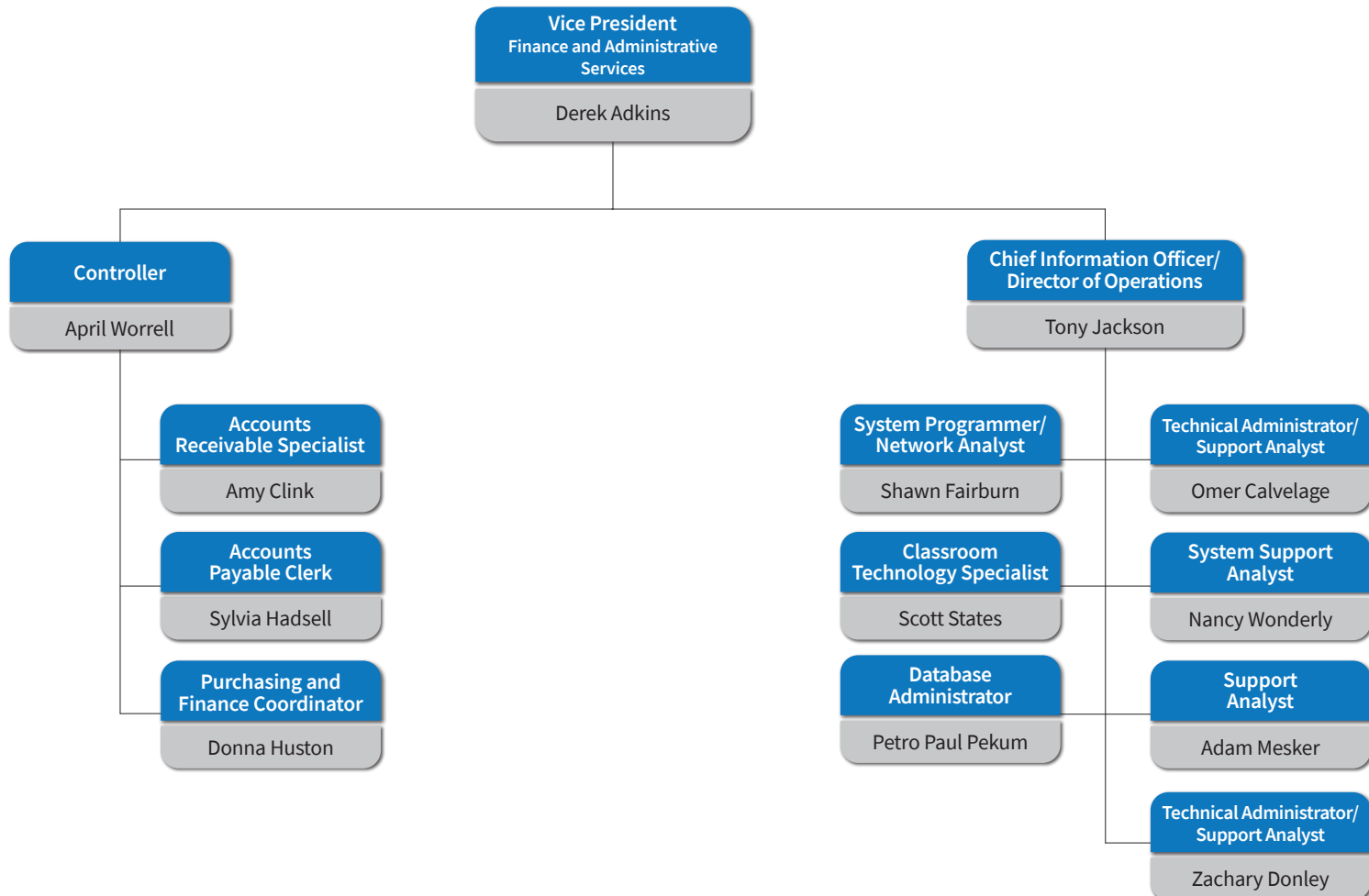
*See detailed Nursing Services organizational chart

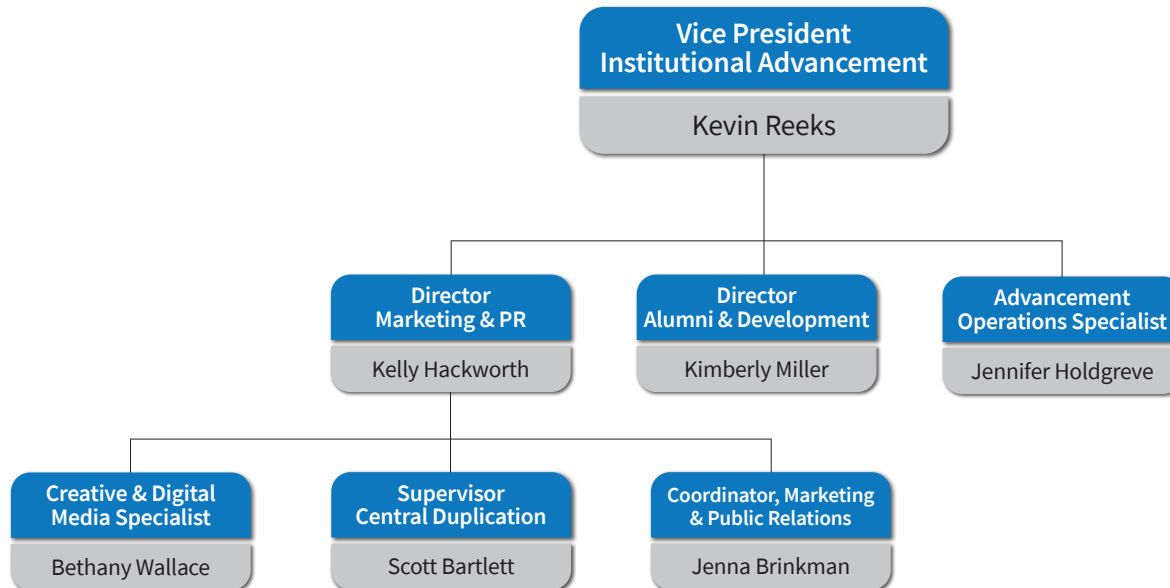
TECHNOLOGY AND LIBERAL STUDIES



ENROLLMENT MANAGEMENT AND STUDENT AFFAIRS







INSTITUTIONAL EFFECTIVENESS PLANNING

