

# Field Notes

Growing Opportunities  
in Agriculture at Rhodes State

February 2025

## Diggin' In



### Engineering Educator Brings Ag Tech Innovations to the Classroom

Rhodes State College's Summer Teaching Institute gave educators hands-on experience in agricultural technology. Dillon Webster, an Engineering teacher at Liberty-Benton Local Schools, applied this knowledge by challenging his students to design and build self-propelled corn planters using robot-building kits, unconventional materials, and 3D-printed components.

Students collaborated with the shop class to construct a test "field" where their planters operated autonomously, accurately placing a single kernel of corn. This project strengthened problem-solving skills, critical thinking, and creativity—essential for careers in engineering and agriculture. By integrating agricultural technology into his curriculum, Webster enhanced STEM education with real-world engineering applications. His efforts highlight the

impact of Rhodes State College's Summer Teaching Institute in fostering future innovators.

Rhodes State College is excited to host the Summer 2025 Teaching Institute: STEM's Role in Sustainably Feeding the World from June 23rd to 27th. This immersive program helps K-12 educators incorporate agricultural technology into their classrooms by applying STEM concepts to real-world challenges.

Throughout the week, participants will engage in interactive workshops, collaborate with peers, and gain hands-on experience with cutting-edge agricultural technology. Educators will leave with practical resources and lesson plans to inspire students through STEM-driven solutions in agriculture.

Know a STEM teacher who would be a great fit for our Summer 2025 cohort? Encourage them to register here: <https://forms.office.com/r/2naNARp8SX>.

## What's on the Horizon?

### Lead the Change Event March 21, 2025

Rhodes State College proudly presents the "Lead the Change in Agriculture" event on March 21st, 2025, from 9:00 a.m. to noon, designed to inspire and connect the next generation of agricultural leaders. This dynamic event brings together high school students with top agricultural employers for an engaging day filled with hands-on activities, demonstrations, and networking opportunities. Students will gain valuable insight into how their coursework translates into real-world agricultural careers, explore diverse career paths, and make connections that could shape their futures in this ever-evolving industry. Don't miss this exciting opportunity to unlock your potential and lead the change in agriculture. Register your students now!

[Click to Register!](#)

## Women in Ag

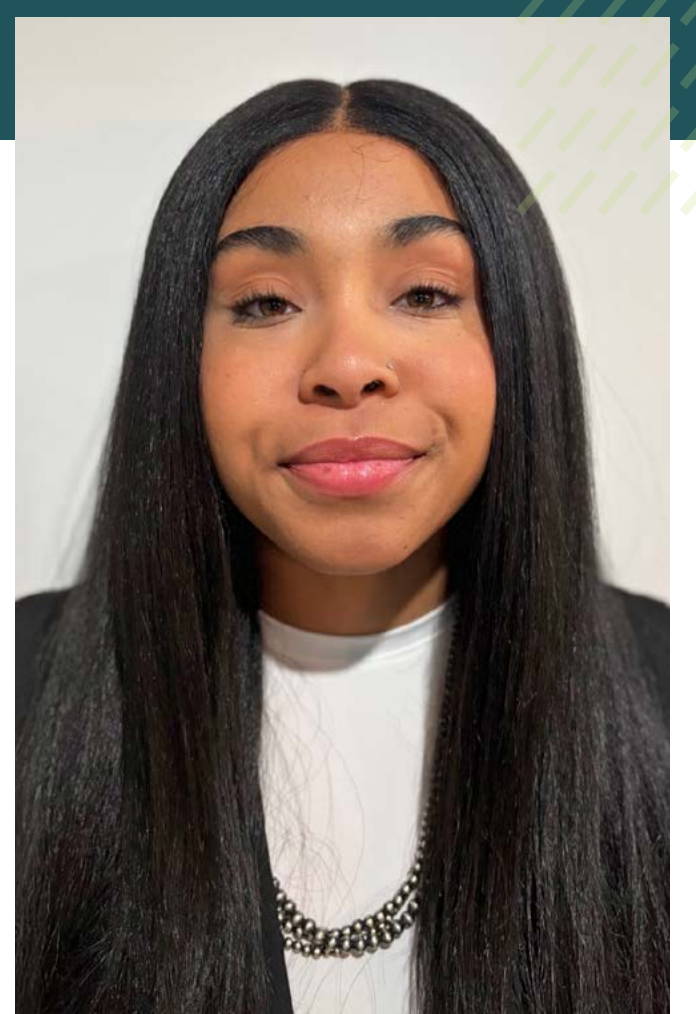
### Join us for the March Lunch & Learn with Meleah Woodford!

We are excited to continue our Lunch & Learn series on March 20, 2025, from noon to 1:00 pm (Virtual) with a special guest, Meleah Woodford, Assistant Barn Manager at Capall Equestrian Center in Akron, Ohio. Meleah, a graduate of Ohio State Agriculture Technical Institute, brings extensive hands-on experience in equine management, barn operations, and animal care.

At Capall Equestrian, Meleah plays a key role in overseeing daily barn activities, ensuring efficient operations, and managing the health and well-being of the horses under her care. She is responsible for coordinating routine and emergency veterinarian visits, administering medications, and assisting with treatments. In addition to horse care, she is experienced in training young horses, grooming, tacking, pasture management, fencing repair, and arena upkeep.

Meleah's passion for animal agriculture is evident in her dedication to providing high-quality care for both horses and staff. Whether you're interested in equine management, veterinary care, or agricultural careers, this event is a great opportunity to gain insights from a knowledgeable industry professional.

Don't miss this engaging discussion! Register now by emailing Danielle Banks at [banks.d@rhodesstate.edu](mailto:banks.d@rhodesstate.edu). We encourage instructors to host class watch parties for an interactive learning experience!



**Danielle M. Banks**  
Project Director, USDA Ag REACH

o. (419) 995-8878  
[banks.d@RhodesState.edu](mailto:banks.d@RhodesState.edu)