



EDUCATE  
COLLABORATE  
INNOVATE

RHODES STATE COLLEGE

MAJOR GIFTS CAMPAIGN

Dear Friends of Rhodes State College,

Educate. Collaborate. Innovate. These three words hold immense meanings on their own. To educate students opens doors that forever change their lives and the lives of those they serve. To collaborate fosters partnerships that strengthen and enrich projects and programs. To innovate captures and materializes ideas that move us forward with spirit and ingenuity.

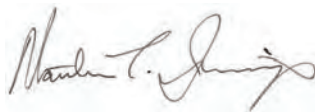
When combined, these three words form the pillars of the Educate, Collaborate, Innovate campaign to create the Borra Center for Health Sciences in downtown Lima and the Emerging Workforce Innovation Center at Rhodes State College. It has been a true community effort from the start, and your participation is vital to help turn this vision into reality.

With a planned completion date of June 2021, the Borra Center for Health Sciences will be home to five of the College's Health Science programs. The Center's design incorporates cutting-edge technology and equipment our region's students need to learn and advance in their healthcare careers. The design also promotes interdisciplinary education, the ability to connect with other health serving organizations and vast training opportunities for area incumbent healthcare professionals.

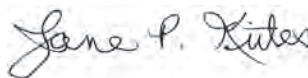
The Emerging Workforce Innovation Center at Rhodes State is equally exciting as area business and industry leaders help establish the focus for the future of education at Rhodes State. This Innovation Center will be dedicated to the business and industry workforce needs of today and adaptable to the workforce needs of the future. It will be a space where ideas do materialize with spirit and ingenuity.

In 2018, Rhodes State College provided \$164 million of economic impact to the region through its operations and alumni. With over 18,000 alumni, most of whom live and work in northwest Ohio, Rhodes stands ready for the next 18,000 alumni who will elevate and grow our region. We extend our invitation to you to join us in this transformational change.

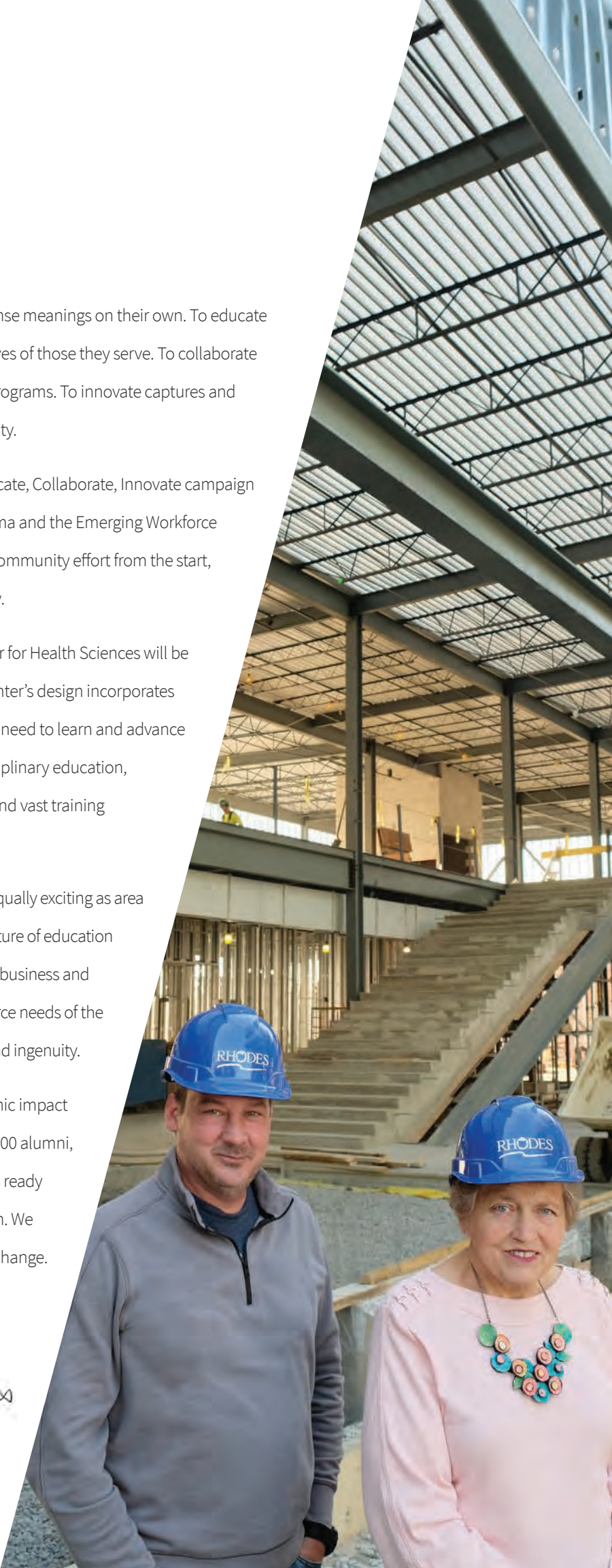
Sincerely,



Matthew T. Jennings, Co-chair



Jane P. Krites, Co-Chair





*Our modern society requires that we educate those Ohioans who want to acquire the special skills so important to meeting today's needs.*

*James A. Rhodes  
Governor of Ohio 1963-71*

## CELEBRATING OUR HISTORY

Rhodes State College changes lives, builds futures and improves communities through life-long learning.

Founded in 1971 as Lima Technical College, Rhodes State College was created from a vision to provide technical training to the citizens of the region. From past to present, it lives that vision with a 10-county service area offering over 70 degrees and certificates. Rhodes State provides a personal experience and a rewarding education for students while supporting and enriching the lives of those within our communities.

The 2018 Economic Impact Study validates that the College provides social and economic growth including its service to business and industry in the region. This 50-year tradition of excellence makes Rhodes State a pillar in our region and creates opportunities for continued and expanded community partnerships.

### ANNUAL ECONOMIC IMPACT OF RHODES STATE COLLEGE

	OPERATIONS IMPACT	STUDENT IMPACT	ALUMNI IMPACT	TOTAL IMPACT
ADDED REGIONAL INCOME	\$23.5 Million	\$3.2 Million	\$137.2 Million	\$164 Million
JOBS REPRESENTED	552	66	2,102	2,719

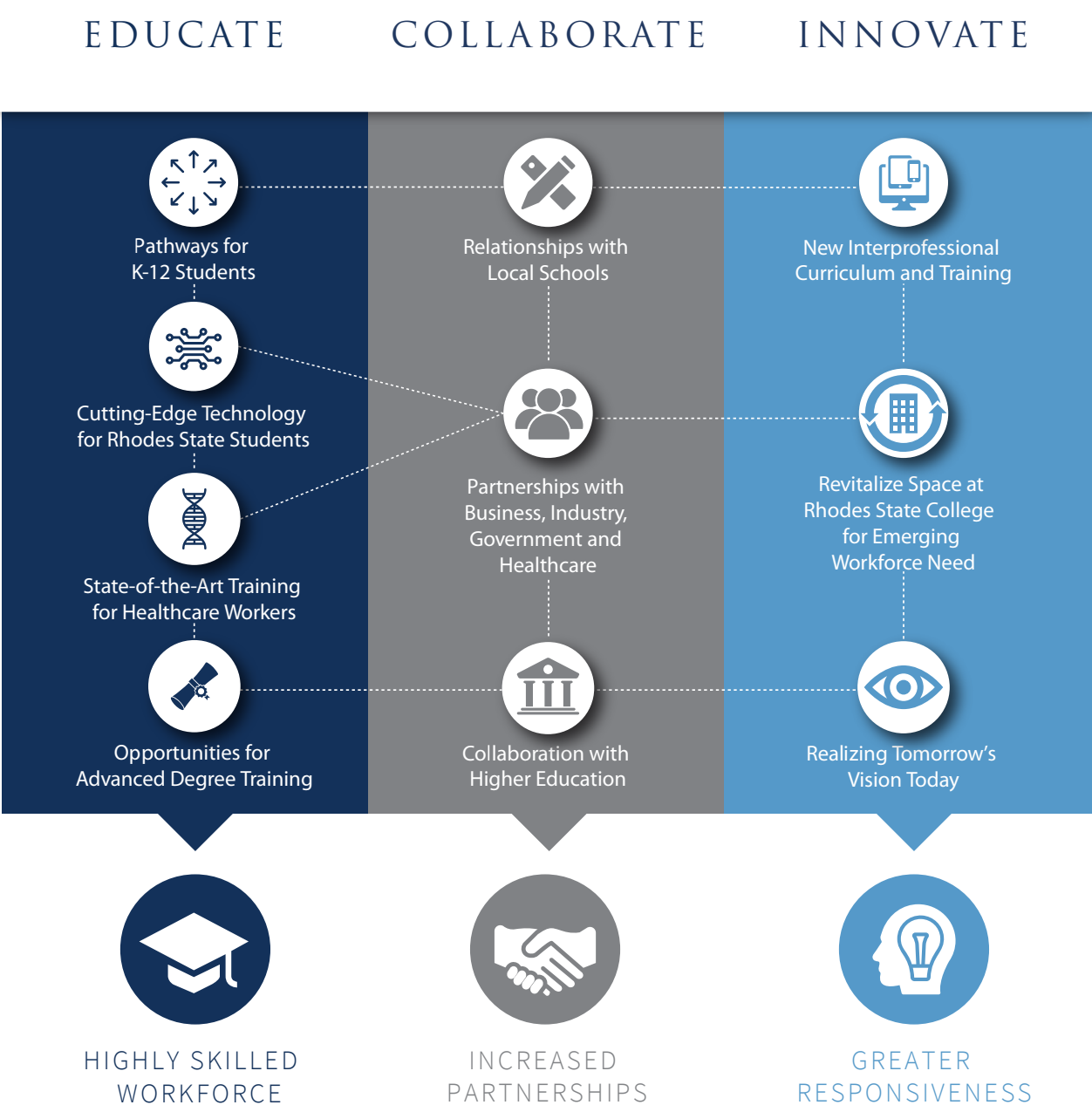
Source: The Economic Contribution of Rhodes State College 2018



# STRENGTHENING AND GROWING PARTNERSHIPS

Rhodes State College plays a key role in helping students increase their employability and achieve their individual potential through degree programs, certifications, apprenticeships and industry training. It provides students with the education and skills they need to have fulfilling and prosperous careers.

Through curricular advancements and growing partnerships, Rhodes will continue to educate and revitalize our region. With 87% of our alumni remaining in the region, a commitment to Rhodes State is a commitment to our region's prosperity.



## RHODES STATE WILL:

- Provide awareness and access to state-of-the-art education which equips current and future employees to face rapidly shifting changes in today's workforce.
- Collaborate toward inclusive opportunities for students with varying academic achievements to promote diverse, regional employment opportunities across all sectors.
- Create innovative partnerships and curriculum to maximize institutional resources which will benefit our students.





## BUILDING FUTURES, CHANGING LIVES

Rhodes State is building upon its tradition of excellence in higher education while continuing its contribution to the economic vitality of our region.

Revised and expanded curriculum, in response to employment needs in our communities, have led to a collaborative initiative to provide access to the most state-of-the-art education available.

To strengthen regional economic prosperity, our partners in healthcare realize their current and future employees will benefit from an educational facility which effectively creates a pathway directly from the identification of a career to viable employment.

Our business and industry partners also know their current and future employees need the same educational opportunities to sustain and grow their businesses.

Rhodes State will meet these goals by the creation of the Borra Center for Health Sciences in downtown Lima and the Emerging Workforce Innovation Center at Rhodes State College.



*Rhodes State [Lima Tech]  
was the turning point in my life  
that gave me a vision and skills*



*to serve my community in a hands-on way.  
It launched an exciting and fulfilling career that has  
continued over four decades and allowed me to  
touch tens of thousands of lives at home  
and around the world.*

*Tim Mosher  
Nurse Practitioner/EMT-P, Mercy Health – St. Rita's  
EMT 1982 and Nursing 1984*

*2015 Rhodes State College Outstanding Alumni Award  
2016 Ohio Association of Community Colleges Distinguished Alumnus*



# BORRA CENTER FOR HEALTH SCIENCES

The Borra Center for Health Sciences will be in the heart of downtown Lima near major healthcare providers. This Center will allow Rhodes to respond to the needs of its healthcare partners by expanding accessibility to enhance incumbent worker and student experiences and by appealing to potential Rhodes State students who are bound for healthcare careers in our region.

The 50,000 square foot Center will be home to five of the College's Health Science programs: Nursing, Emergency Medical Services, Occupational Therapy Assistant, Physical Therapist Assistant and Respiratory Care.

The Center's design promotes interprofessional teaching and learning opportunities in a realistic healthcare environment. With 8,000 additional square feet of classroom space for the Health Science programs, the Center will provide student spaces that encourage group and individual learning and the finest technology available. Adjacent to the grand lobby, the Center features a room housing an interactive video wall for student collaboration and lessons, while having the ability to connect Rhodes State students to other colleges and healthcare providers for enhanced experiences.



*During my time at Rhodes, I earned two degrees – one in Respiratory and one in Nursing.*

*The experience and time that I spent at Rhodes (LTC) provided me with a strong foundation for my healthcare career; it was the knowledge that I received and the experiences that I had while at Rhodes that have truly helped to shape me into the healthcare professional that I have become. Today, I proudly serve as the Chief Nurse Executive at Lima Memorial Health System and have earned my Baccalaureate, Masters and Doctoral degrees in nursing.*

*Ann Pohl, DNP, RN  
Vice President of Patient Care Services and  
Chief Nursing Officer, Lima Memorial Health System  
Respiratory Care 1989 and Nursing 1995*



## TECHNOLOGIES THAT LEAD

The Borra Center for Health Sciences will incorporate cutting-edge technology and equipment which will transform the delivery of education for students and training for regional healthcare professionals:

- 3D Anatomage virtual simulation tables
- Nine-panel MultiTaction collaborative video wall
- Four clinical simulation suites – Medical-Surgical, Obstetrical, Surgical and Emergency/ICU – with high definition patient simulators, four dedicated debriefing rooms and a central control room
- Open ambulance simulator capable of simulating road conditions
- Home-care lab for physical and occupational therapy
- 12-bed nursing lab
- Four-bed respiratory care lab



The Anatomage Table is 85.1% more effective than a cadaver-based lab experience.



Rhodes State College will be one of four colleges in the country to connect the Anatomage tables with the MultiTaction wall. This greatly expands the number of students who can concurrently use the equipment for multiple lessons and allows Rhodes students to connect with healthcare facilities or other colleges around the country.







*Greater Lima Region, Inc. fully supports the Emerging Workforce Innovation Center at Rhodes*

*State. Having a highly skilled workforce is key to attracting business and industry to our region, and we applaud Rhodes State for their forward-thinking efforts in support of local employers. GLR looks forward to assisting Rhodes State as they continue to play a leading role in workforce development.*

*Doug Olsson, President/CEO  
Greater Lima Region, Inc.*

## EMERGING WORKFORCE INNOVATION CENTER

Opening the Borra Center for Health Sciences reveals opportunities to reenergize space and establish the Emerging Workforce Innovation Center at Rhodes State College. The Innovation Center will be dedicated to emerging and current business and industry workforce needs.

The process to create the Emerging Workforce Innovation Center involves listening to partners to plan the scope of the needed educational programs, technology and equipment. During the spring of 2020 a survey was conducted with area business and industry leaders. They shared their thoughts on how Rhodes State can help them secure future employees, train current employees and be responsive to rapidly changing needs. These conversations will continue as the Innovation Center becomes a reality.

### 2020 BUSINESS AND INDUSTRY SURVEY COMMENTS

“Do you need an education? Absolutely. But it can and should look different... Rhodes should repurpose the space to fit those different needs.”

“Let’s provide pathways that give students multiple opportunities to determine what’s best for them.”

“Rhodes is looked at as a cornerstone in the community.”







*I find great fulfillment with my career knowing that I get to help people in our*

*community achieve independence and live their lives to the fullest following several types of injuries, illnesses, or accidents.*

*I can honestly say that without the background that Rhodes State prepared me with, I would not have been able to grow into the practitioner that I am.*

*Brittany Patterson  
Occupational Therapy  
Assistant 2015  
Mercy Health – St. Rita's*



# ONGOING COMMITMENT

The Rhodes State College Foundation, established in 1978, is a 501(c)3 non-profit which, through the financial support of individuals, corporations and foundations enhances the Rhodes State experience for our students. The Rhodes State College Foundation is committed to responding to the needs and challenges of Rhodes State by seeking funding partnerships to ensure scholarship support, programmatic support and capital support.

With a growing scholarship program that has awarded over \$2.2 million to students over the past twenty years and two successful capital campaigns in its history, the Rhodes State College Foundation assures donors that their gifts to the Educate, Collaborate, Innovate campaign will be used to strengthen the lives of many individuals, families and communities for generations to come.

## RHODES STATE COLLEGE FOUNDATION BOARD OF DIRECTORS

Mr. Matthew T. Jennings, Chair

Mr. Richard P. Kortokrax\*, Vice Chair

Ms. Mary Elmquist-Lane

Ms. Teri Hirschfeld

Ms. Jane P. Krites\*

Ms. Alberta M. Lee

Ms. Carrie Jones Lewis

Dr. Francis O. Oruma

Dr. Jan L. Osborn

Dr. Ann Pohl\*

Bishop Darnell K. Williams, Sr.


\*Alumni




# INVITING YOUR SUPPORT

We are inviting you to partner with us in the Rhodes State College \$8 million Educate, Collaborate, Innovate campaign. Your gift will help secure the future of these facilities, including cutting-edge technology, equipment and interactive spaces, demonstrating your commitment to our region’s education and growth.

## AN INVESTMENT IN RHODES STATE IS AN INVESTMENT IN OUR COMMUNITIES

 **87%** Rhodes State Alumni who live and work in the region

 **97%** Rhodes State Alumni who live and work in Ohio



### RHODES STATE COLLEGE BOARD OF TRUSTEES

Ms. Jane Krites\*, Chair

Mr. Douglass S. Degen\*, Vice Chair

Mr. Everett “Butch” Kirk III

Dr. Wilfred G. Ellis

Mr. Sam Bassitt

Mr. John Paradore

\*Alumni



## FROM THE PRESIDENT

In my 22 plus years with Rhodes State, I have worked for three of the College's presidents. The mentorship from each of these Presidents and increasing administrative leadership opportunities, including leadership positions during two of the College's reaccreditations, seasoned me to lead the College today. While the history of Rhodes State is vitally important, it is its future and great potential that drives me. The opportunities we embrace today will provide the space, technology and collaboration needed to educate our regional workforce for decades to come. It is our collective responsibility to secure this investment.

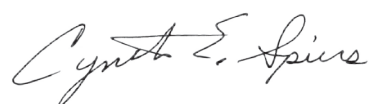
The pillars of this campaign – Educate - Collaborate - Innovate – tell the story of what lies ahead for higher education. A 21<sup>st</sup> century workforce needs knowledge, certainly, but the strength of our success is centered in our ability to collaborate and innovate. We need employees who are agile, can think quickly and adapt seamlessly, all while working as a team and with other teams.

For a half century this College has a solid record for preparing the region's workforce for careers in business, healthcare and public service. And, of the 18,000 plus Rhodes State alumni, the vast majority call northwest Ohio their home—the place where they work, live and raise families.

The Borra Center for Health Sciences and the Emerging Workforce Innovation Center are exciting projects that will propel Rhodes State's students for years to come with spaces that are interactive; include state-of-the-art technology and simulation; and provide new paradigms of teaching and learning, including interdisciplinary learning opportunities that meet today's demands and tomorrow's emerging requirements. Just as when this College was established, people are coming together, daring to plan and dream of the future we can provide for our students, communities and region.

When I became president, I said, "I have poured my heart and soul into this institution." It's true. I believe in its students, its faculty, its staff and the people in the wonderful communities we serve. Thank you for all we have done together and for all we will continue to accomplish together.

Warmest regards,



Cynthia E. Spiers, PhD  
President



*I chose Rhodes State College  
due to the outstanding support of  
staff and the excellent education.  
I discovered my passions involved caring  
for the elderly and making a healthy impact on others.  
My love for nursing grew. Rhodes State College has empowered  
me to stay connected with the Lima community and my family.  
My education has taught me to pursue new opportunities,  
build from my past and thrive in the present.*



Faith Johnson  
2017 and 2018 Borra Scholarship Recipient  
Nursing 2019  
Mercy Health – St. Rita's





EMERGING WORKFORCE  
INNOVATION CENTER  
AT RHODES STATE

RHODES STATE COLLEGE  
MAJOR GIFTS CAMPAIGN



# MAKING A DIFFERENCE

## Addiction Services and Social Work Program

The Addiction Services and Social Work Program is for students who are passionate about helping individuals with substance use disorders. The curriculum prepares students to pursue the Chemical Dependency Counselor Assistant (CDCA) and/or the Licensed Chemical Dependency Counselor II (LCDC II) certifications from the Ohio Chemical Dependency Professionals Board. Students will also be prepared to achieve the Social Work Assistant (SWA) through the Ohio Counselor, Social Worker and Marriage and Family Therapist Board.

With this degree and three possible state certifications, students will be ready for meaningful careers helping those with substance use disorders.

### Phase I: Certificate Launch - Fall 2021

#### Addiction Services Certificate

The Addiction Services Certificate can be earned by taking two courses that provide the hours in specific chemical dependency content areas to pursue the Chemical Dependency Counselor Assistant (CDCA-Preliminary and CDCA-Renewable) from the Ohio Chemical Dependency Professionals Board.

HUM 1720	Substance-Related & Addictive Disorders	3
HUM 2710	Addictions Counseling	3
		Total Credit Hours 6

This series of courses provides the 40 hours of chemical dependency education for the CDCA-Preliminary and the 30 hours of chemical dependency education for the CDCA-renewable by providing 90 hours of chemical dependency specific education content.



### Phase II A - Design of Dedicated Space - Spring 2022

Design a dedicated space on main campus: the **Justin A. Borra Center for Addiction Studies and Services**.

Rhodes State College will be the first institution in the area to specifically design a center for the education of students in the field of addictions. A dedicated space will:

- Provide a highly functional and effective space for students to learn and practice skills
- Showcase the importance of this program
- Demonstrate the vital and essential need of addiction services careers

The Center’s technology will create a HyFlex classroom which allows students to access meetings and materials online or in-person, during or after class sessions. The HyFlex technology enables lectures, discussions, and presentations to be recorded in real time for synchronous learning or for viewing later. This is the most contemporary learning mode to enable all students the ability to attend college on busy schedules. Additionally, the technology enables connection to external partners (hospitals, treatment centers, and universities) for learning opportunities.

### Phase II B - Associate Degree Launch - Fall 2022

### Phase III - Mental Health Services - Spring 2023

Provide in-person mental health services for students by qualified professionals at the Justin A. Borra Center for Addiction Studies and Services on the Rhodes State campus.



# LEADING THE WAY IN AGRICULTURE

## The Rhodes State Agriculture Technology Program

The Rhodes State Agriculture Technology Program will provide students hands-on experience with precision equipment and smart technology used in farming to optimize crop yield and increase efficiencies. Students will be trained to adapt and adopt emerging applications and technology.

Agriculture Design Laboratories (ADLs) will be a part of the newly designed space and will include high-tech simulation and collaborative learning areas. Simulators and real-time equipment will be utilized for training in computers and industry developed software, planters, drones, sensors, robots, and smart (autonomous) vehicles.

### Areas of Study

#### Agriculture Business

Students will be introduced to agriculture business, sales and marketing, and sustainable agriculture.

#### Agronomy

Students will learn about soils and crop, nutrient, and pest management.

#### Prescription Mapping

Students will experience surveying and associated GPS/GIS principles, drone and remote sensing technology (crop, soil, and environmental data), data analysis and interpretation, and map creation.

#### Robotics and Artificial Intelligence (AI)

Students will gain a technical foundation and practical understanding of operation and repair of robotic applications in agriculture. This is a dynamic and emerging area with many prototypic applications.

#### Career Areas

Students completing these options will be prepared for technician positions with farmers, agricultural consulting firms, local equipment dealers, agriculture suppliers, agricultural retailers, and equipment manufacturers.

## Agriculture Design Laboratories (ADLs)

Four Agriculture Design Laboratories (ADLs) will be created in the James J. Countryman (JJC) Engineering and Industrial Technology Building at Rhodes State. The ADLs will be used for college courses, workshops, seminars, and to showcase regional agriculture. A living wall will serve as the focal point to compliment displays of local agriculture history along with collaborative learning spaces for students, faculty and industry partners. The long-term vision includes a greenhouse for focused agronomic studies and community gardens to experience applied agriculture. The development of the ADLs will occur in phases:

### Phase I: Agronomy - Spring 2022

The Agronomy learning space includes a Hyflex classroom and a soils wet laboratory. The classroom, with a demonstration table to showcase experiments in the room and virtually, will be connected to the soils laboratory.

### Phase II A: Robotics/Autonomous Center – Summer 2022

In the Robotics/Autonomous Center, students will experience manufacturing and agriculture robots and agriculture autonomous vehicles. This Center will serve both the agriculture and manufacturing programs with a Hyflex classroom, a laboratory for robots and autonomous vehicles, and a computer lab.

### Phase II B: Enhance Atrium and Classrooms – Summer 2022

The JJC Atrium will serve as the entrance to the ADLs. It will include multiple wall monitors, a living wall, and collaborative learning spaces for students. The large JJC classrooms will become Hyflex classrooms to allow students to attend classes in person and virtually.

### Phase III: Precision Agriculture Building – Spring 2023

The Precision Agriculture Building will house the technology and equipment for prescription mapping. It will have a lecture room and laboratories for GIS, drones, and prescription mapping. Students will install and troubleshoot precision equipment using actual agricultural implements to capture data to develop maps to plot field, soil, water and seed conditions to increase crop yields and efficiencies.

### Phase IV: Gardens – Summer 2023

Outdoor gardens will be established for student and community use.

Four Agriculture Technology Certificates are approved and the Agriculture Technology Associate Degree program is pending Higher Learning Commission approval.





# NEW AND ENHANCED DEGREES AND CERTIFICATES

## Radiographic Imaging

The Radiographic Imaging program will begin offering two new certificates in Mammography and Computed Tomography (CT) in 2021. The program, accredited by the Joint Review Committee in Radiologic Technology, will have a redesigned space at Rhodes with new equipment and technology. Graduates are prepared for radiography careers in numerous healthcare settings, and radiography is a foundation for careers in diagnostic medical sonography, imaging education and healthcare administration.



## Surgical Technology Program

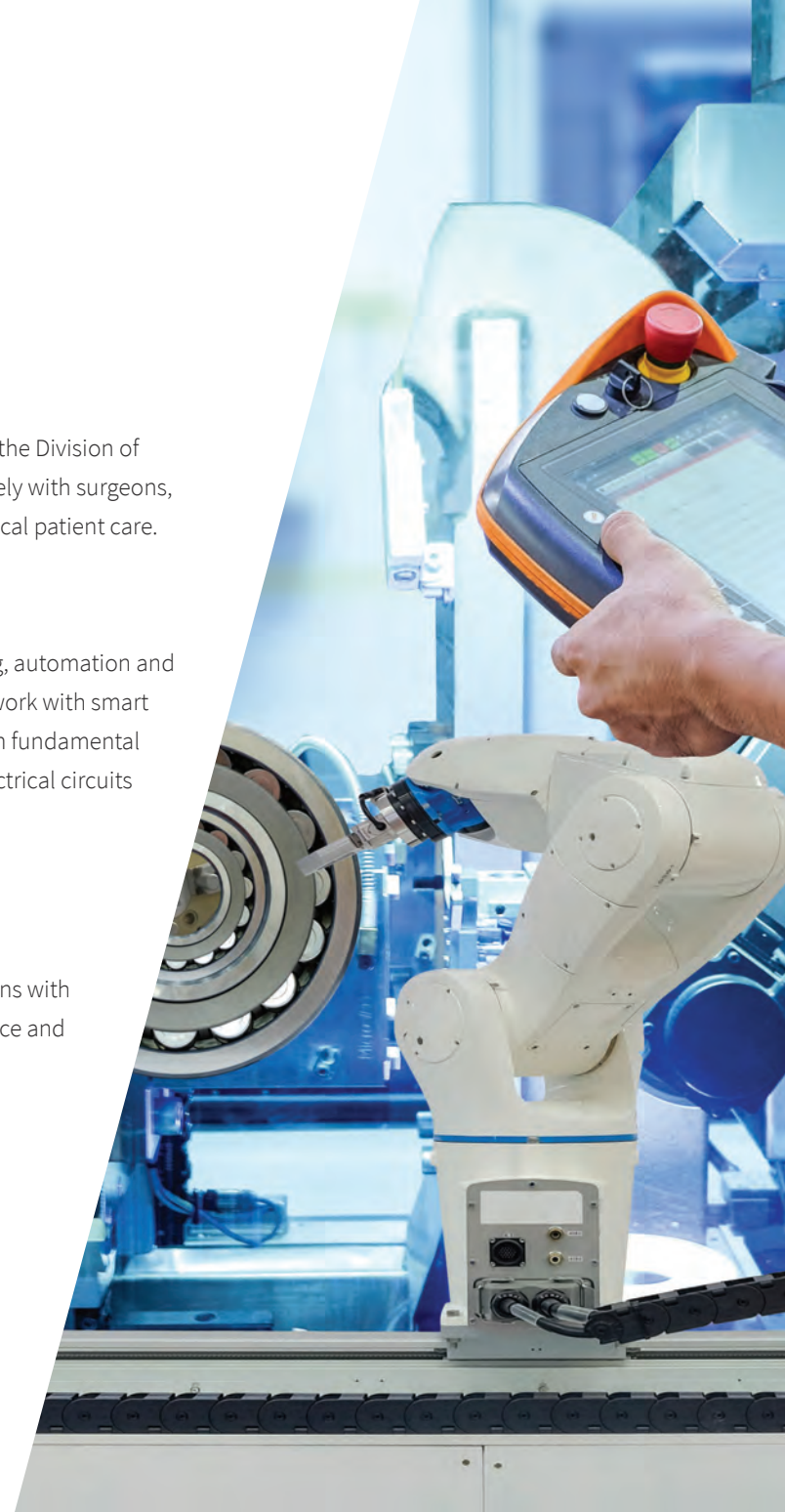
The Surgical Technology program will be the newest associate degree in the Division of Health Sciences and Public Service. The surgical technologist works closely with surgeons, anesthesiologists, registered nurses, and other personnel delivering surgical patient care.

## Industry 4.0

Industry 4.0 focuses on interconnectivity of production, machine learning, automation and real-time data. It provides students with the foundational knowledge to work with smart automation and the Industrial Internet of Things (IIoT). Students will learn fundamental skills in programmable logic controllers, pneumatics, hydraulics, and electrical circuits while focusing on key elements of Industry 4.0:

- Robotics and Mechatronics
- Additive Manufacturing
- Cyber Security
- Autonomous Machine

Students completing this program will be prepared for technician positions with employers in the areas of robotics and electrical, mechanical, maintenance and additive manufacturing.







A variety of Naming Opportunities  
are available for all areas of the  
Emerging Workforce Innovation Center.

For questions or more information  
on your giving options, please contact:

**Kevin L. Reeks**

Vice President for Institutional Advancement

[Reeks.K@RhodesState.Edu](mailto:Reeks.K@RhodesState.Edu)

419-995-8081 or 419-236-6490

Rhodes State College

4240 Campus Drive, JJC 175

Lima, Ohio 45804





## Rhodes State College Annual Economic Impact



**\$164M**  
28% Increase

From 2012 to 2018 the overall annual economic impact of Rhodes State College operations, students and alumni grew 28%, from \$128M to \$164M.

The \$164.0 million annual economic impact supports 2,719 jobs. For perspective, this means that one out of every 106 jobs in the Rhodes State College primary region is supported by the activities of Rhodes State and its students, with alumni having the largest impact at over \$137 million.



**17.4%**  
Student ROI

For every \$1 students invest in their education at Rhodes State, they receive a cumulative of \$5.20 in higher future earnings. The average annual rate of return for students is 17.4% with the average Rhodes State associate degree graduate earning \$10,000 more each year. Over a working lifetime, this increase is approximately \$430,000 more earnings than a person with only a high school diploma.



**13.8%**  
Taxpayer ROI

For every \$1 of public money invested in Rhodes State, taxpayers receive a cumulative value of \$6.90 over the course of the students' working lives. The average annual rate of return is 13.8%, a solid investment that compares favorably with other long-term investments in both the private and public sectors.

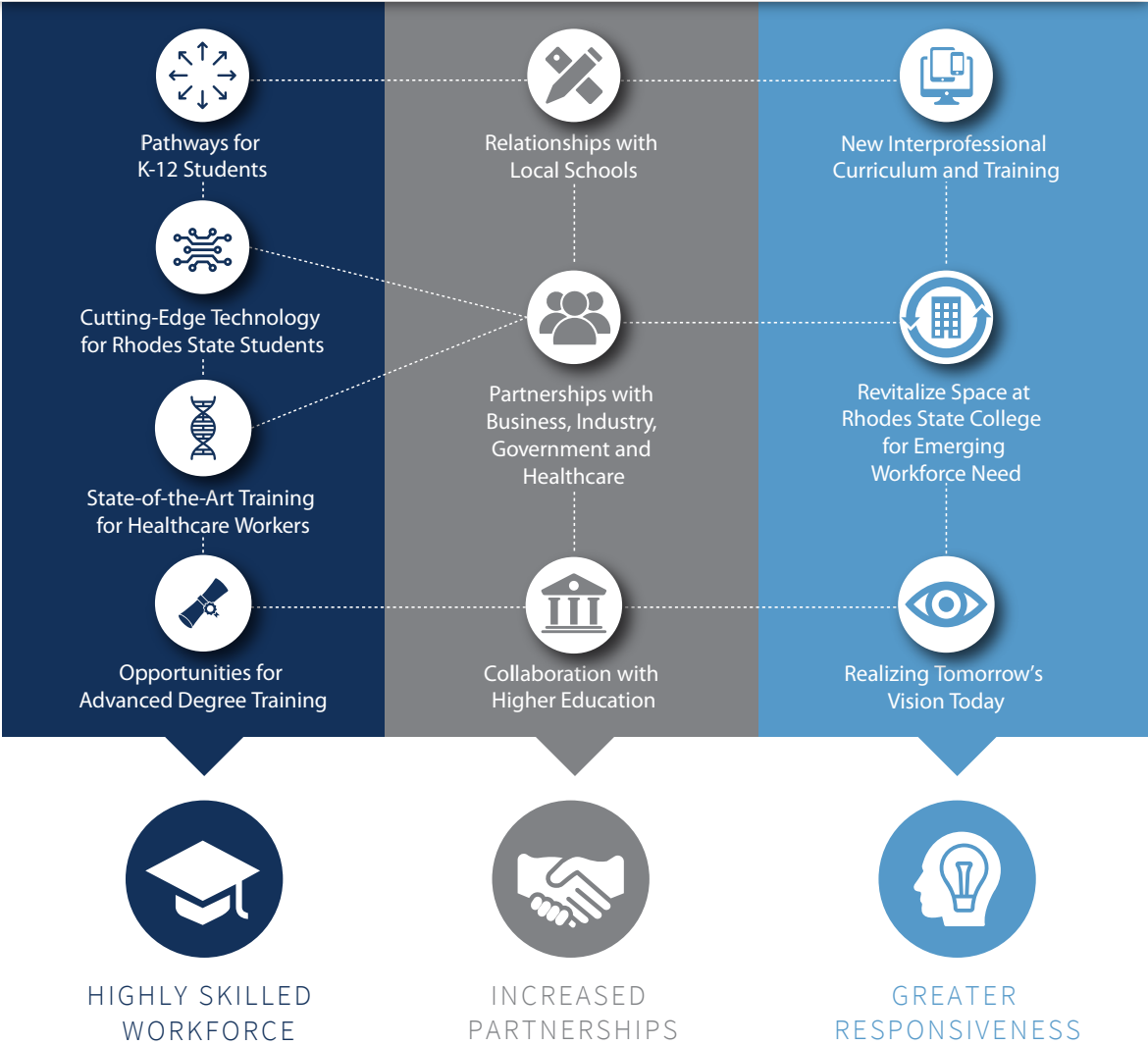
Source: The Economic Contribution of Rhodes State College 2018



EDUCATE

COLLABORATE

INNOVATE







## Borra Center for Health Sciences

Leaving a legacy or honoring another individual through the Naming Opportunities is a meaningful way to support Rhodes State and further the growth of the College and our communities.

**Naming opportunities are reserved on a first-come, first-served basis.**

Please contact Kevin Reeks at 419-995-8081 or [Reeks.K@RhodesState.Edu](mailto:Reeks.K@RhodesState.Edu) for current availability.

### Center for Health Sciences

- Reserved

### Grand Lobby/Commons

- \$1,000,000

### Interactive Video Wall Classroom

- \$750,000

### Nursing Classroom and Lab

- \$500,000

### Emergency Medical Services Classroom and Lab

- \$500,000

### Clinical Simulation Suites (4 opportunities)

- \$250,000

### Occupational Therapy Assistant and Physical Therapist Assistant Home Lab

- \$150,000

### Respiratory Care Classroom and Lab

- \$150,000

### First Level Conference Room

- \$100,000

### Gait Garden

- \$100,000

### Occupational and Physical Therapy Classroom and Labs (2 opportunities)

- \$100,000

### Second Level Student Area

- \$100,000

### Classrooms (6 opportunities)

- \$50,000

### Outdoor Plaza Artwork (6 opportunities)

- \$50,000





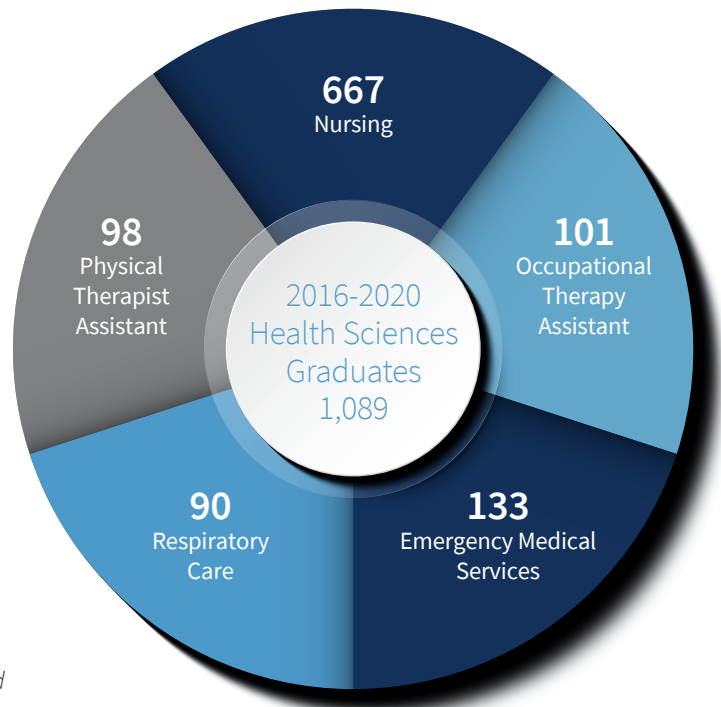
Over the past five years, almost 1,100 students have graduated from the programs that will be located in the Borra Center for Health Sciences.



*At Rhodes State I had the opportunity to gain hands-on, real-world experience which ignited my passion for the health sciences.*

*I learned the art of compassion and the humility required to care for others during their most intimate moments. I was surrounded with teachers and mentors who were truly invested in my success. As I further my medical education and training, I continue learning in a variety of facilities. With these experiences, I can firmly say that the health care services offered by Rhodes graduates are on the cutting edge at both the regional and national levels. The Borra Center for Health Sciences in downtown Lima will afford students the environment to hone their clinical acumen. Rhodes trained health care professionals are leading the way in the clinic, community and beyond.*

*Nicholas J. Pratt, Nursing 2014  
2016 Borra BSN Scholarship Recipient  
RN and MD Candidate 2022*



The 667 Nursing graduates include 510 Registered Nurses and 157 Practical Nurses.





## Health Sciences Licensure Passage Rates

Rhodes State passage rates meet or exceed national averages.

Rhodes State College		National	Source
Nursing RN	88%*	88%*	National Council of State Boards of Nursing
Practical Nursing	100%	86%	National Council of State Boards of Nursing
Emergency Medical Services	90%	78%	National Registry of Emergency Medical Services
Occupational Therapy Assistant	100%	89%	National Board for Certification in Occupational Therapy
Physical Therapist Assistant	100%	93%	Federation of State Boards of Physical Therapy
Respiratory Care	100%*	62%*	National Board for Respiratory Care

\*Includes students from both two- and four-year institutions



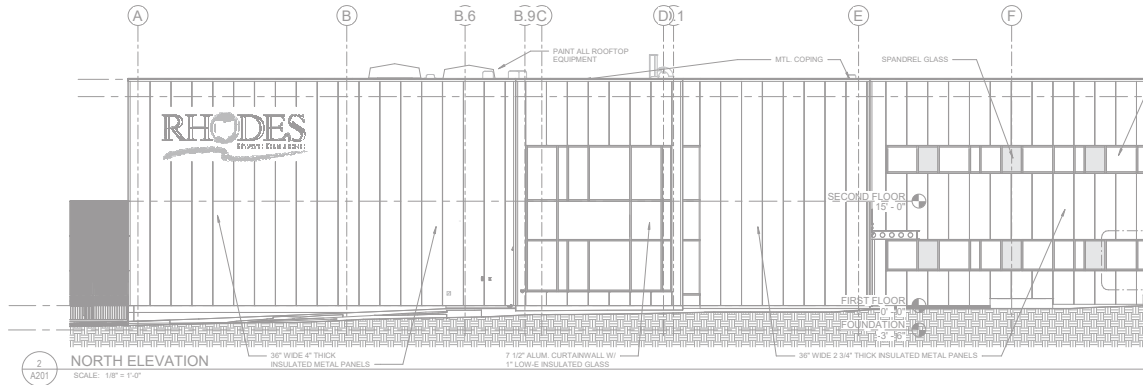
*From clinical skills to critical thinking and professionalism, my education from Rhodes State College prepared me to be more than just a*

*well-rounded PTA. The professors always challenged me to strive to be an exceptional Physical Therapist Assistant for the maximum benefit of my patients. The dedication to my profession, that was instilled in me at Rhodes, has led me to become a clinical instructor and Site Coordinator of Education for my company on top of being a full-time PTA. These added positions have allowed me to further utilize and pass along the wonderful educational experience I had at Rhodes.*

*April Wannemacher, Physical Therapist Assistant 2007  
PTA, BSPTA, SCCE  
Therapy Solutions, LLC*



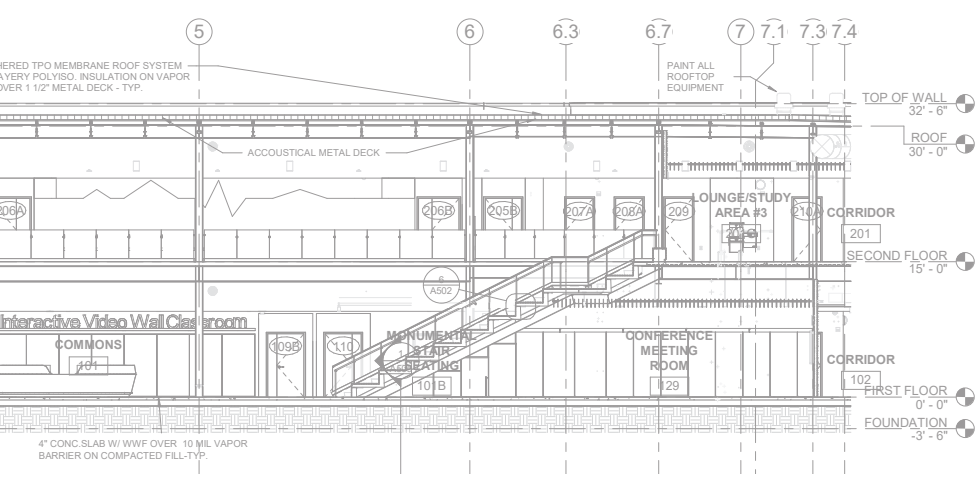
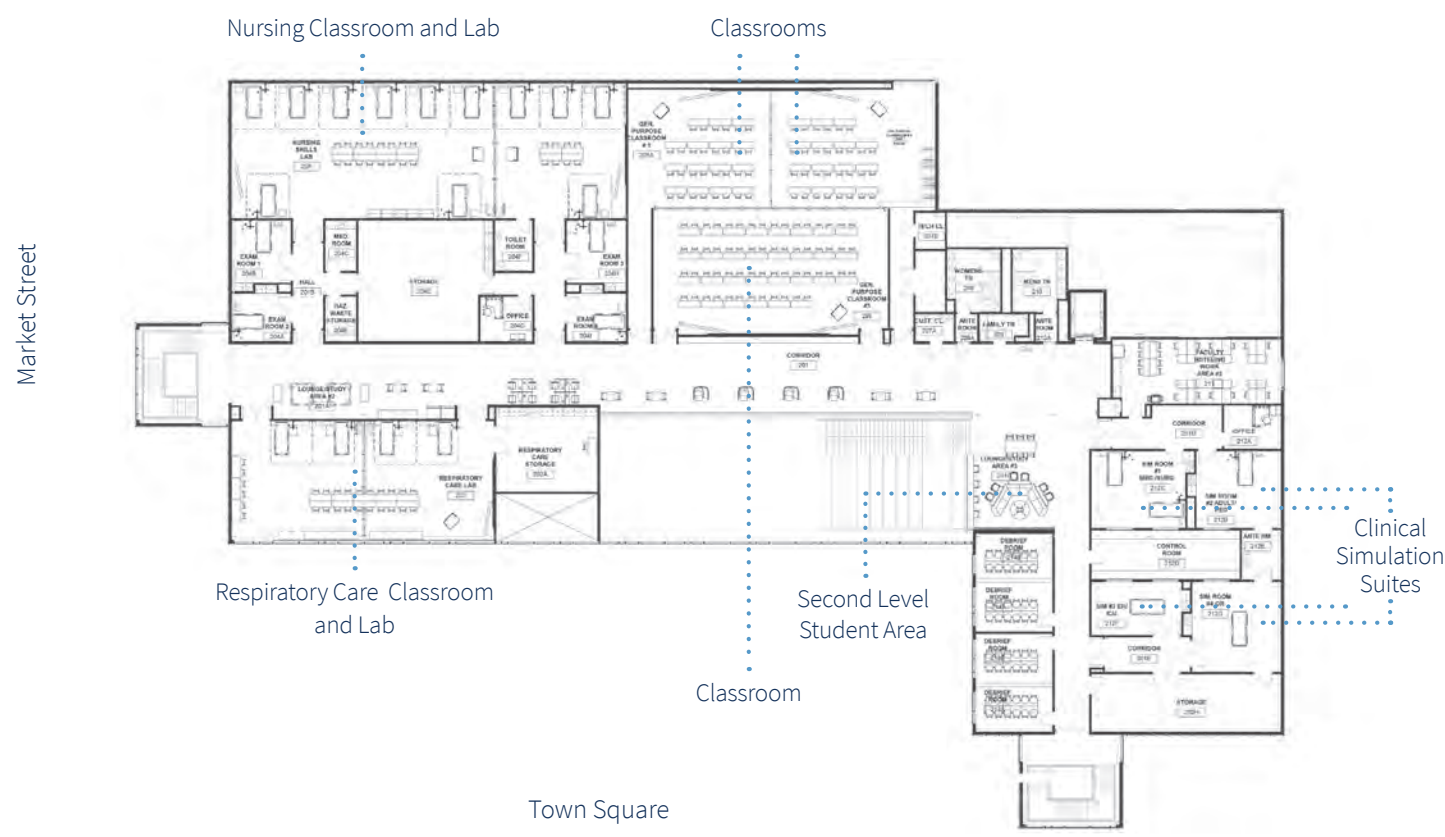
## First Level







# Second Level







## Educate Collaborate Innovate

Your gift will help educate students in collaborative learning spaces, leading to abundant opportunities to innovate with new and continuing partners. As you indicate your commitment, please consider a five-year pledge. Thank you.

### Donor Information

Name(s) \_\_\_\_\_

Address \_\_\_\_\_

City, State, Zip \_\_\_\_\_

E-mail \_\_\_\_\_ Phone \_\_\_\_\_

Signature \_\_\_\_\_ Date \_\_\_\_\_

### Enclosed is my/our

☐ Gift of \$ \_\_\_\_\_ ,  
or

☐ Pledge of \$ \_\_\_\_\_ with annual payments of \$ \_\_\_\_\_

for ☐ 1 ☐ 2 ☐ 3 ☐ 4 ☐ 5 year(s), beginning \_\_\_\_\_ / \_\_\_\_\_ / \_\_\_\_\_

Please send a payment reminder via ☐ email or ☐ USPS, according to the following schedule:

☐ Quarterly ☐ Semiannually ☐ Annually ☐ Other: \_\_\_\_\_

### Direct my/our donation to the following area(s)

Please see back of card for descriptions of areas.

☐ Borra Center for Health Sciences ☐ Emerging Workforce Innovation Center

☐ Innovation Fund ☐ Scholarships ☐ Area of Greatest Need

If you have chosen more than one area, please indicate how you wish to have your gift divided:

\_\_\_\_\_

☐ This gift/pledge includes a Naming Opportunity: \_\_\_\_\_

### Payment

Please make checks payable to the Rhodes State College Foundation. To process a gift or pledge payment via credit card, please complete the following information:

☐ Visa ☐ Master Card ☐ American Express

☐ My credit card billing address is the same as the address listed above. If different, please provide billing address: \_\_\_\_\_

Name on Credit Card: \_\_\_\_\_

Credit Card Number: \_\_\_\_\_

Expiration Date: \_\_\_\_\_ Security Code: \_\_\_\_\_

### Recognition

☐ Please use the following name(s) in all acknowledgements:

\_\_\_\_\_  
\_\_\_\_\_

☐ I/we wish to remain anonymous.

All gifts and pledges to the Educate Collaborate Innovate Major Gifts Campaign are deeply appreciated and will be acknowledged. Gifts of \$2,500 or more will be recognized in a permanent display according to the following levels:

#### Rhodes Society

- \$1,000,000 +

#### President's Circle

- \$500,000 to \$999,999

#### Fellows

- \$250,000 to \$499,999

#### Innovators

- \$100,000 to \$249,999

#### Partners

- \$50,000 to \$99,999

#### Collaborators

- \$25,000 to \$49,999

#### Ambassadors

- \$15,000 to \$24,999

#### Friends

- \$2,500 to \$14,999

The James A. Rhodes State College Foundation is a 501(c)(3) nonprofit organization established to generate community and financial support for Rhodes State College to assist the College in achieving its mission: *Rhodes State College changes lives, builds futures and improves communities through life-long learning.*

Please return in the enclosed envelope. Thank you.





## Descriptions of Areas



### Borra Center for Health Sciences

Located in the heart of downtown Lima, this 50,000 square foot Center will house state-of-the-art equipment and educational space for five of the College's Health Science programs: Nursing, Emergency Medical Services, Occupational Therapy Assistant, Physical Therapist Assistant and Respiratory Care.

### Emerging Workforce Innovation Center

When five of the College's Health Science programs move into the Borra Center for Health Sciences, the College will reenergize space on its main campus, approximately 22,000 square feet, for the Emerging Workforce Innovation Center.

### Innovation Fund

Designed for donors to create an impact in an area of interest that meets College needs to provide technology, equipment and resources for educational programs.

### Scholarships

Gifts may be directed to existing Rhodes State College Foundation scholarships or donors may create their own endowed scholarship with a beginning level of \$10,000.

### Area of Greatest Need

Gifts to this fund help meet immediate needs of the College and its students.

For questions or more information  
on your giving options, please contact:

**Kevin L. Reeks**

Vice President for Institutional Advancement

Reeks.K@RhodesState.Edu

419-995-8081 or 419-236-6490

Rhodes State College

4240 Campus Drive, JJC 175

Lima, Ohio 45804

