



Quick Reference Guide to

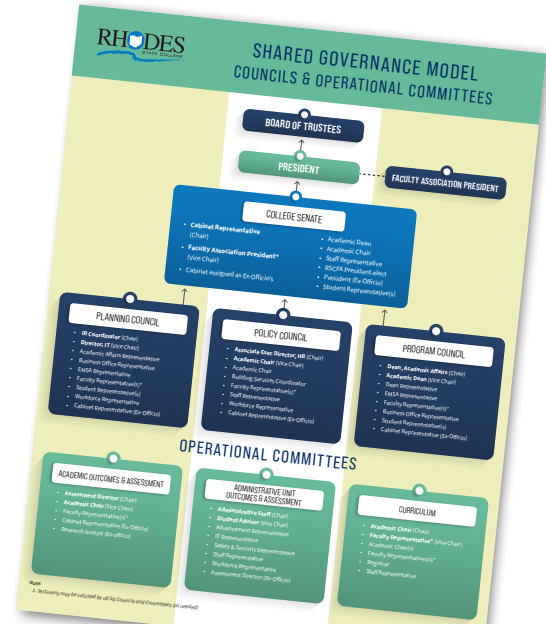
SHARED GOVERNANCE

Shared Governance Overview

- Authorized by the Board of Trustees
- Enhances efficiency and advances the College's interests
- Supports the **MISSION, VISION, and CORE VALUES**
- Fosters collaboration
- Model restructured to improve overall efficiencies

Shared Governance Defined...

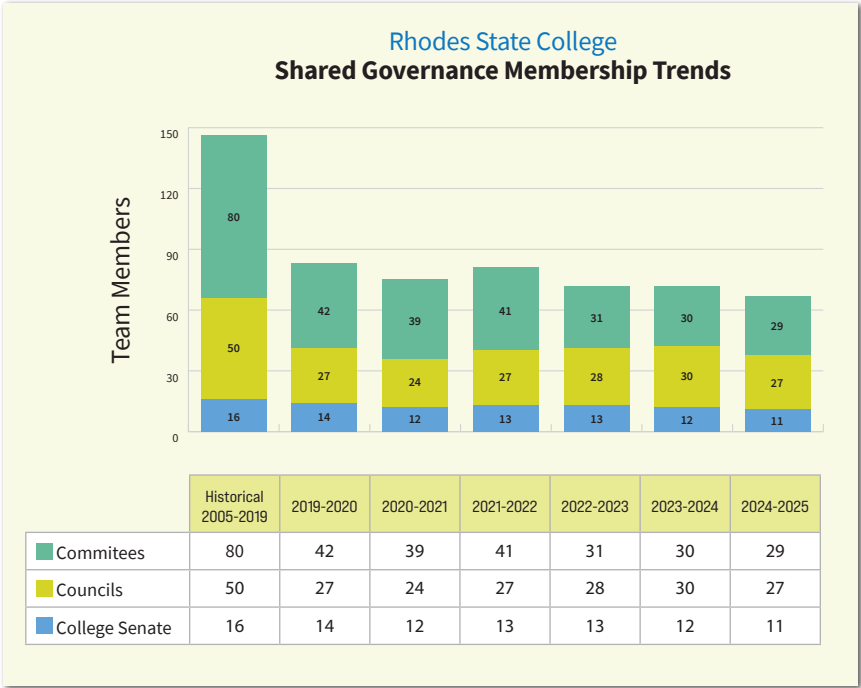
- An **INCLUSIVE** process
- Involves College-wide **ENGAGEMENT**
- Influence on **DECISION-MAKING** in matters of
 - Planning
 - Policy
 - Programs



Shared Governance Overview

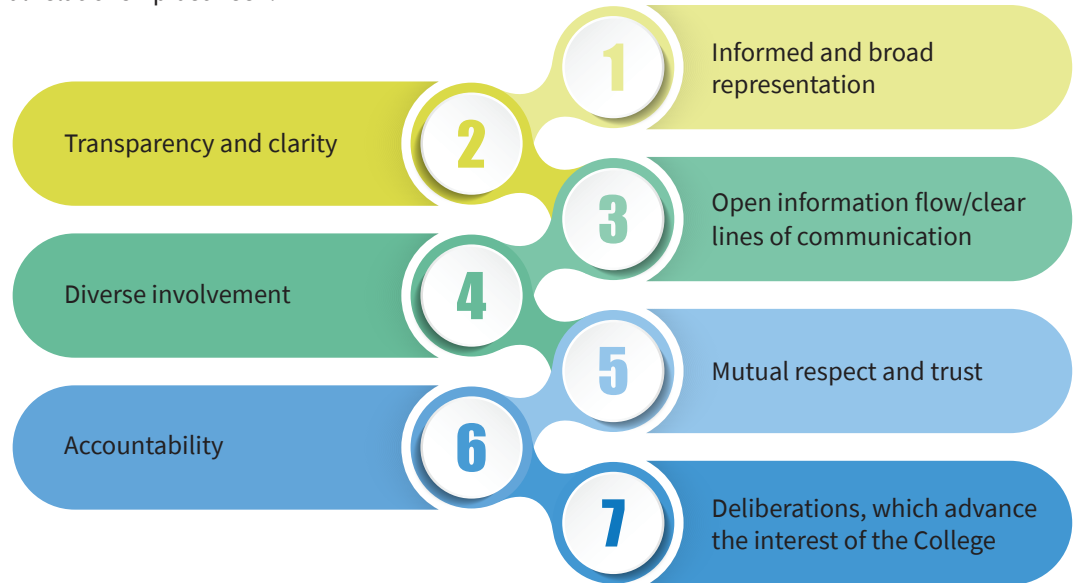
Historical Context

- Goal → Increased Efficiencies
 - 54% decrease in overall membership since 2018-19
- Streamlined Councils, Committees and overall Membership
 - Historical = 146 members
 - College Senate +
 - 6 Councils
 - 10 Committees
 - YTD = 67 members (avg.)
 - College Senate +
 - 3 Councils
 - 3 Operational Committees



Guiding Principles

- Shared Governance is based on 7 Guiding Principles
- Defines a mutually beneficial relationship between:
 - Students
 - Faculty & Staff
 - College leadership
 - Board of Trustees



Accountability & Oversight

Recognizes the:

- Role and authority of the Board of Trustees
- Presidential accountability for decisions

Establishes a Process for:

- Timely recommendations
- Transparency
- Decision-making
- Engagement
- Involvement

*Dr. Cynthia E. Spiers
President*



Scan for current Board of Trustees



Stakeholder Involvement

- Shared Governance ensures representation and engagement of:
 - Faculty
 - Staff
 - Students
- Each stakeholder group appoints representatives with:
 - Broad perspectives
 - Expertise to provide insight and feedback
 - 3 Councils
 - 3 Operational Committees



Membership



Cabinet

- Serve as members of the College Senate.
- Align and inform SG actions.
- Provide guidance to Councils and Committees.
- Appoint SG members.
- Evaluate proposals and provide recommendations.
- Communicate SG actions effectively.



Faculty & Staff

- Offer testimony and share unique insights.
- Serve on Councils or Committees.
- Contribute knowledge and expertise.
- Advocate for the College's interests.
- Review proposals and provide recommendations.
- Inform faculty and staff about SG actions.



Students

- Represent the student perspective on key issues.
- Share insights on matters affecting students.
- Participate in Senate and select Council/Committee meetings.
- Collaborate with the Senior Director of Student Success to inform students about SG actions.

Scope of Work

Planning

The process of establishing institutional priorities and defining goals and objectives to drive mission fulfillment, enhance institutional effectiveness, and support continuous improvement.

Program

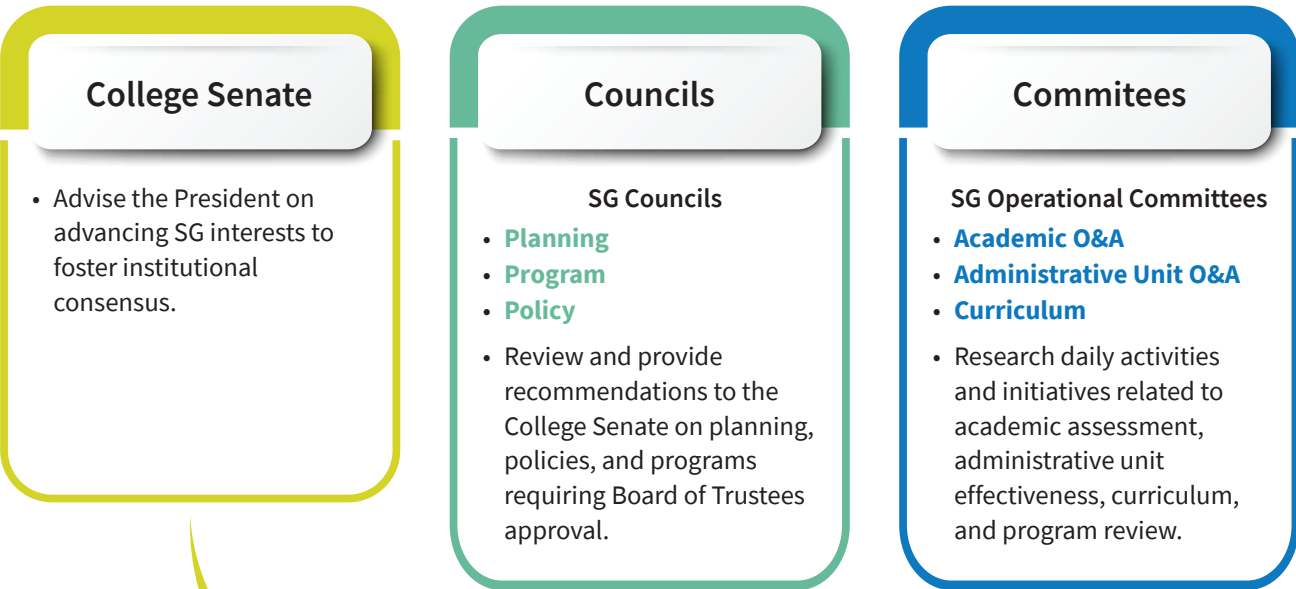
Academic degrees, certificates, and other significant curricular changes as defined by the Office of Academic Affairs.

Policy

Establish principles, rules, and regulations that guide College management and decision-making.



General Responsibilities



Appointments

Voting Member

- Considered an active member of the Senate, Council, or Operational Committee, eligible for one vote or participation in the consensus decision-making process.

Non-voting Member

- A member for whom a replacement has been requested by the Chair, but who is not considered an active member and, therefore, is not eligible to vote.

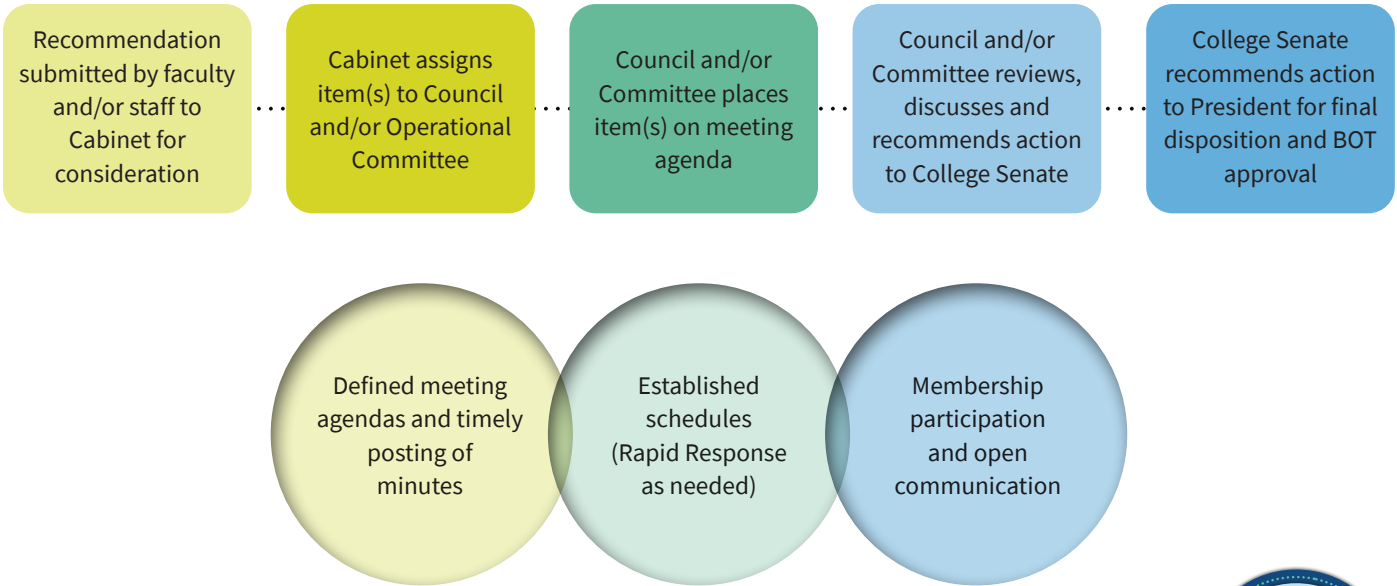
Named Member

- A member appointed by the President, recommended by the Cabinet, or serving by virtue of their position.

Appointed Member

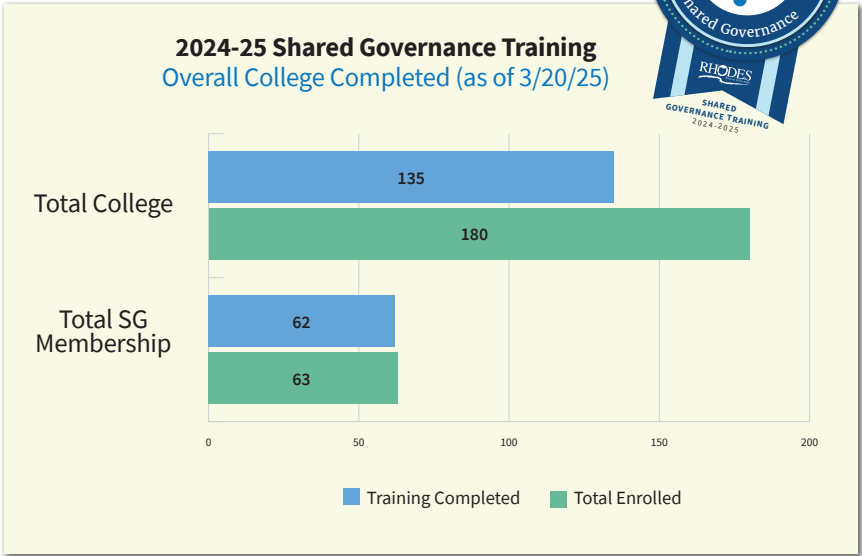
- A member appointed either through a representative stakeholder group to serve as its voice or by a Cabinet member to fulfill a specific role.

Process & Organization



Shared Governance Effectiveness

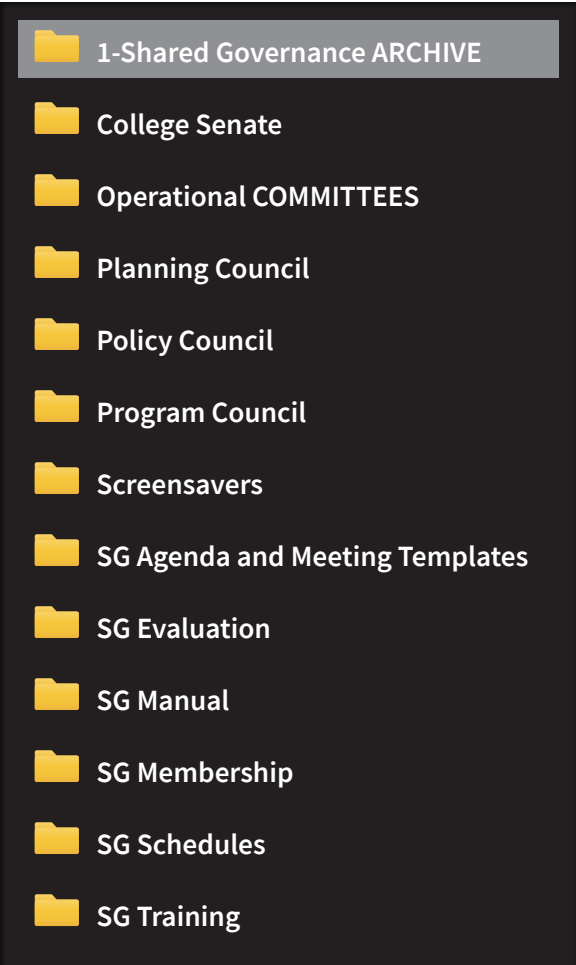
- Annual Survey
 - Stakeholder feedback
 - Membership insights
- 3-year Assessment
 - Planning
 - Organization
 - Participation
 - Processes & Procedures
- College-wide Professional Development
 - Online/in-person Training
 - Chair/Vice Chair “Huddles”
 - Membership Roles/Responsibilities



Where to Find Information

- Shared Governance Manual
- College Website
 - Institutional Effectiveness Planning Page
 - RSC SharePoint (Intranet)
- Shared Governance Training
 - Canvas LMS
- Senate Chair Summaries
 - Sent via email
 - After College Senate meetings

G:\SHARED GOVERNANCE



Shared
Governance

Questions? Contact:
VP for Institutional Effectiveness Planning, College Senate Chair
RSCFA President, College Senate Vice Chair



Scan to access Shared Governance website