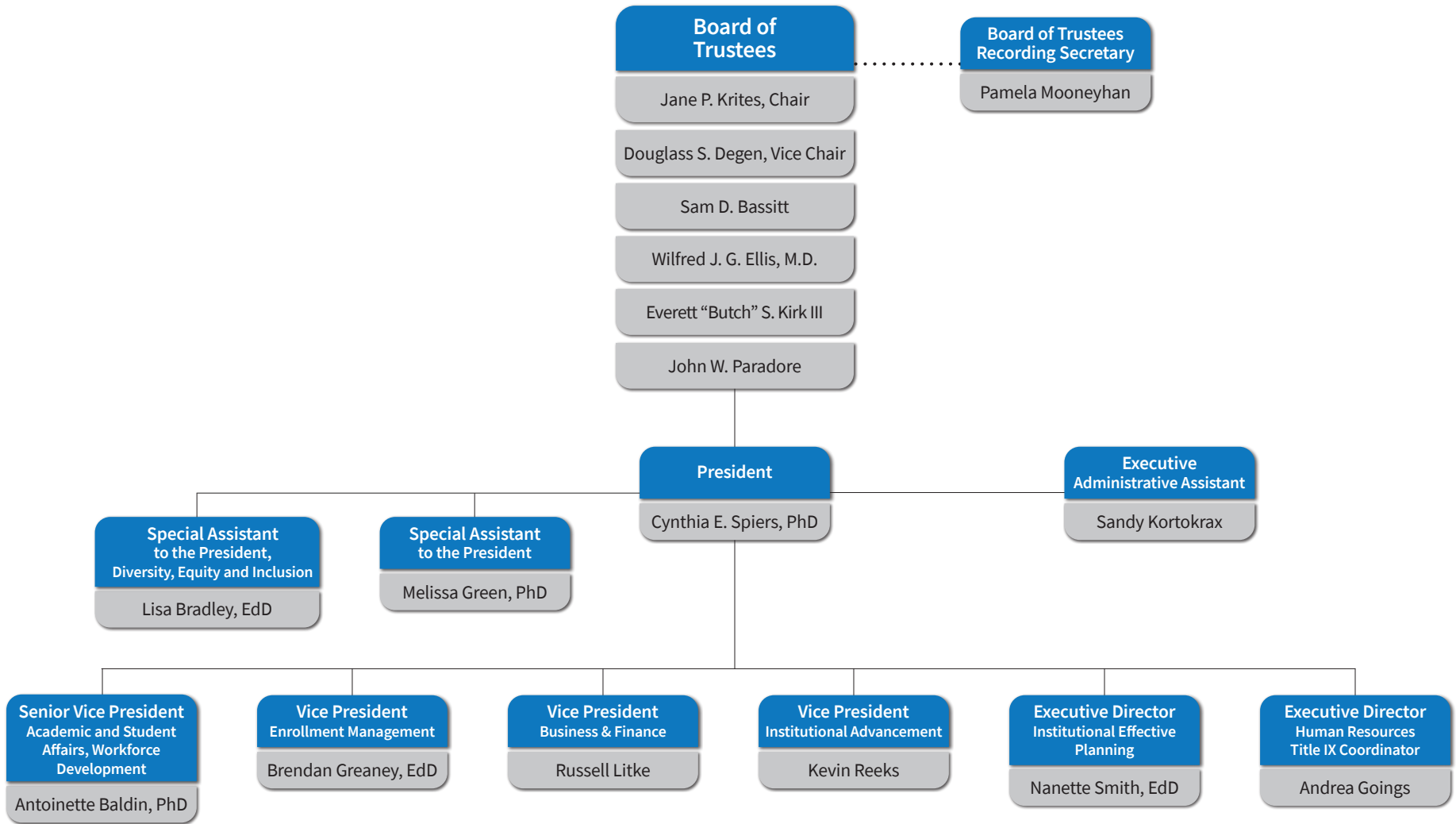
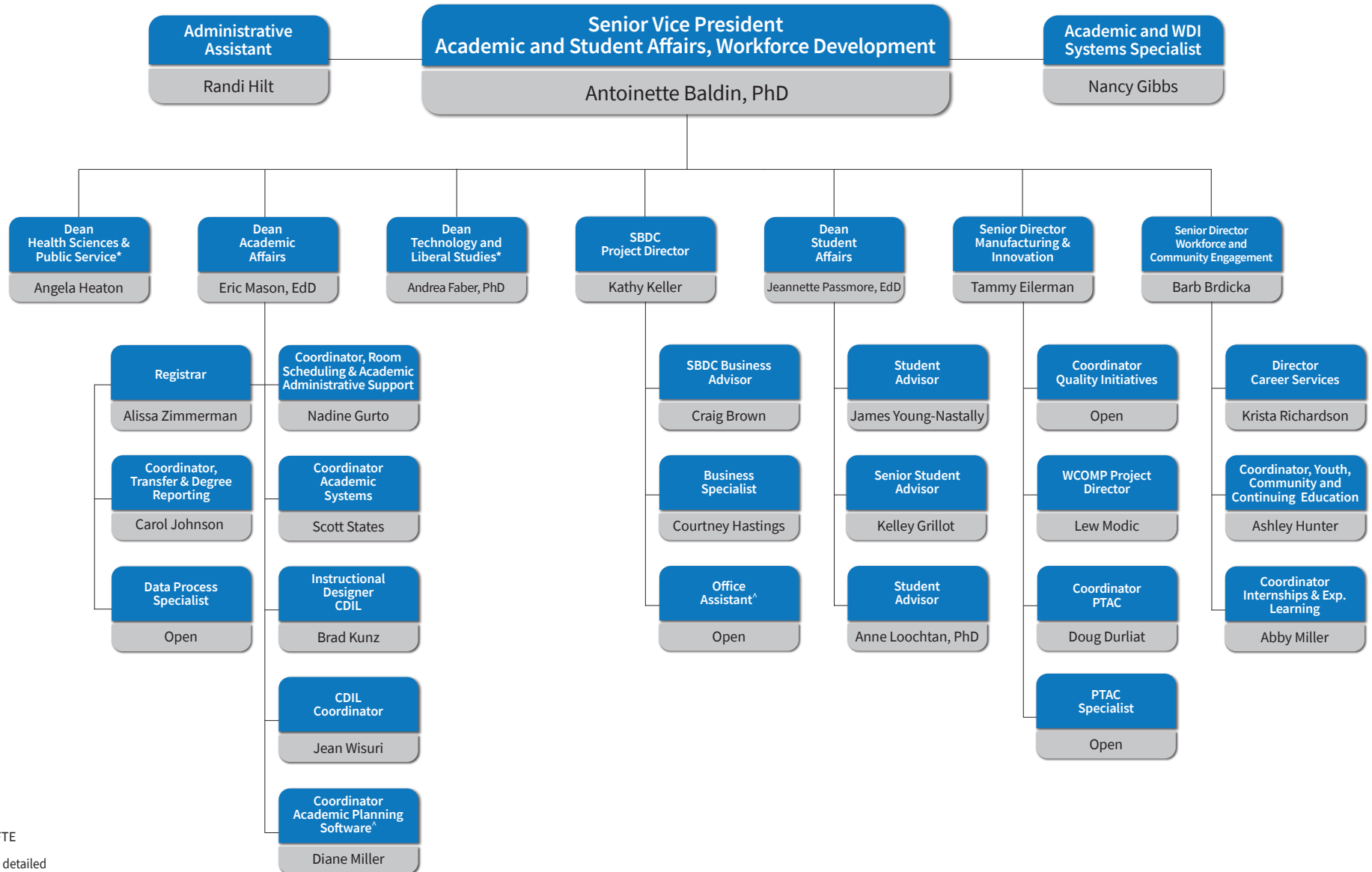


OFFICE OF THE PRESIDENT

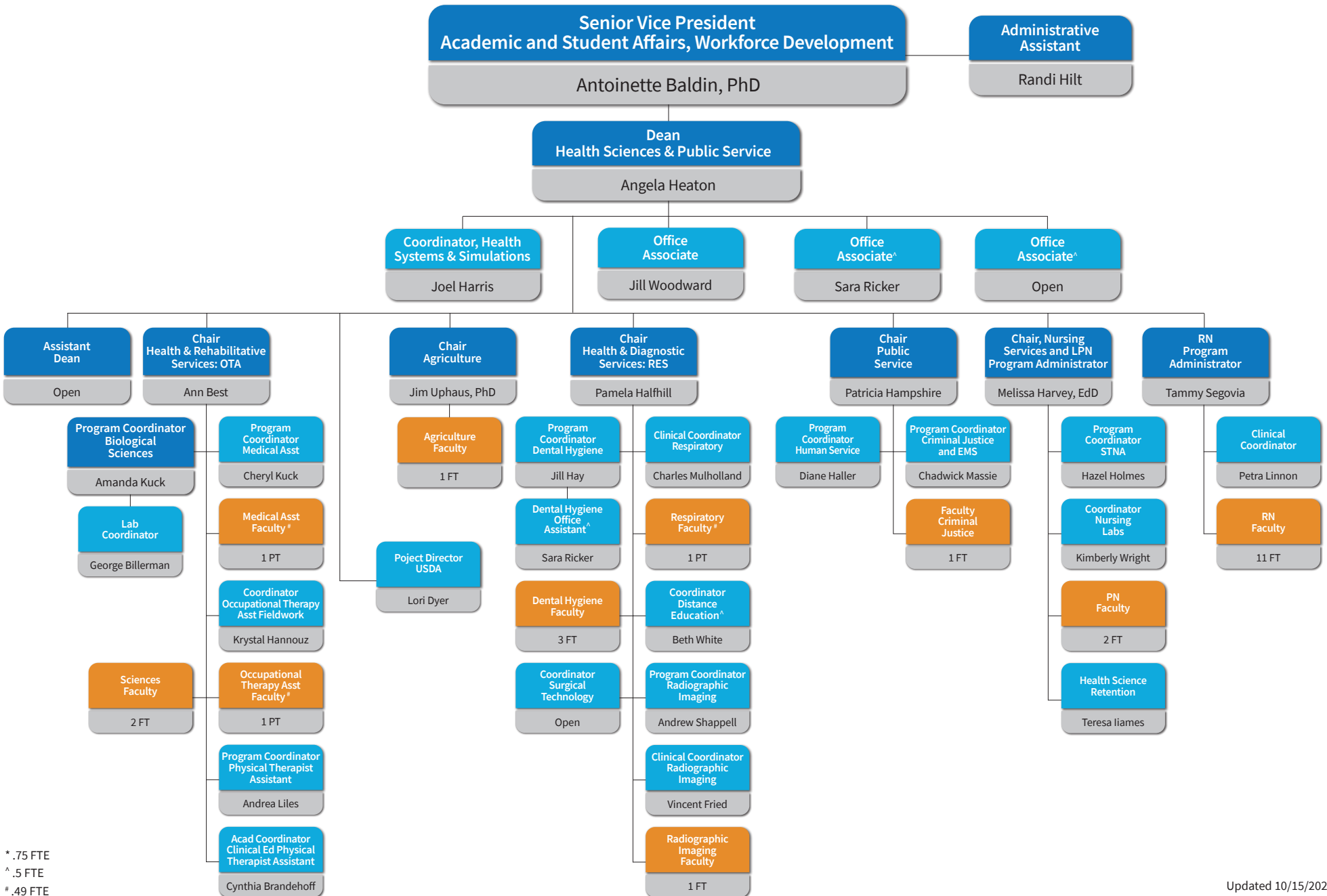




^ .5 FTE

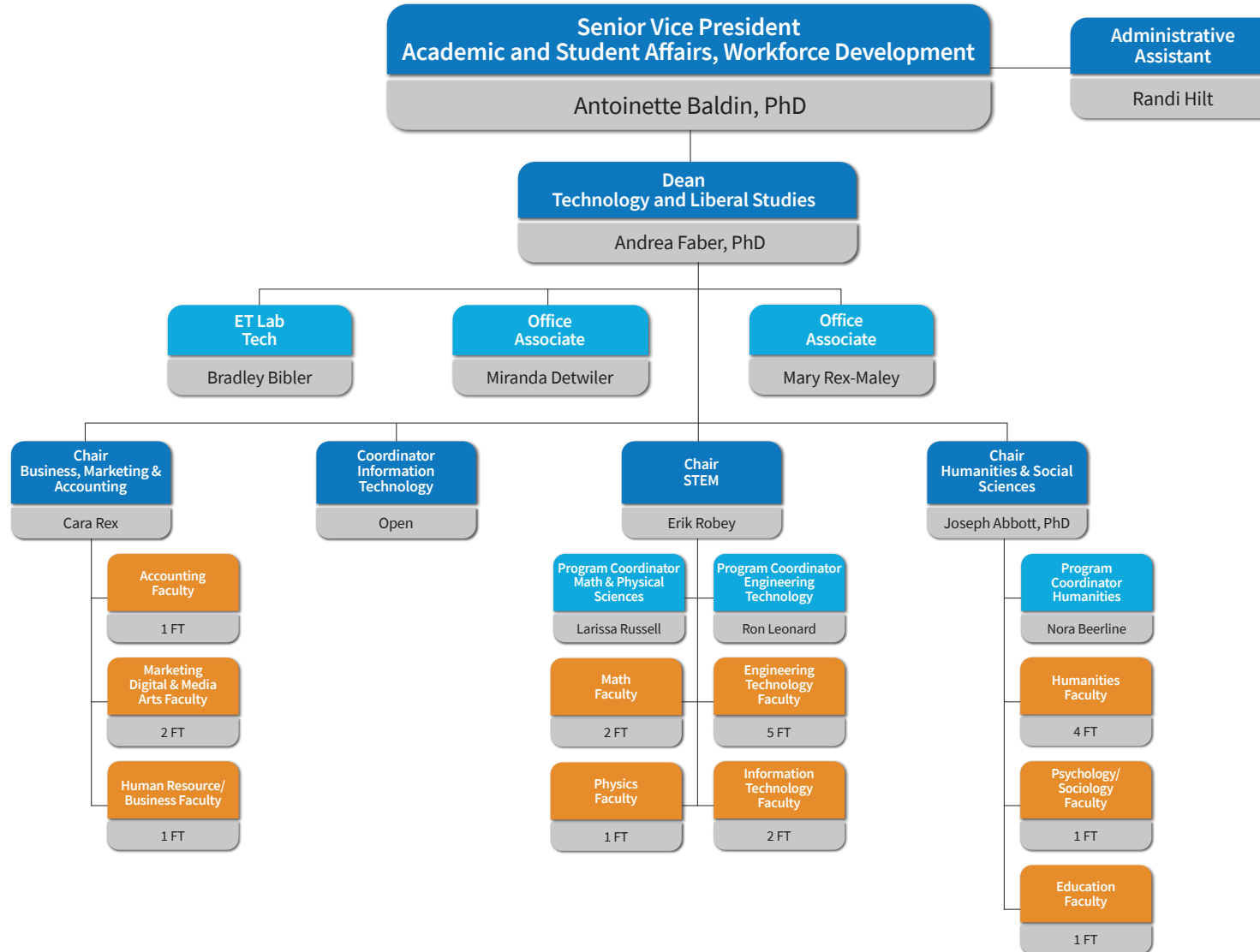
* See detailed Division organizational chart

HEALTH SCIENCES & PUBLIC SERVICE

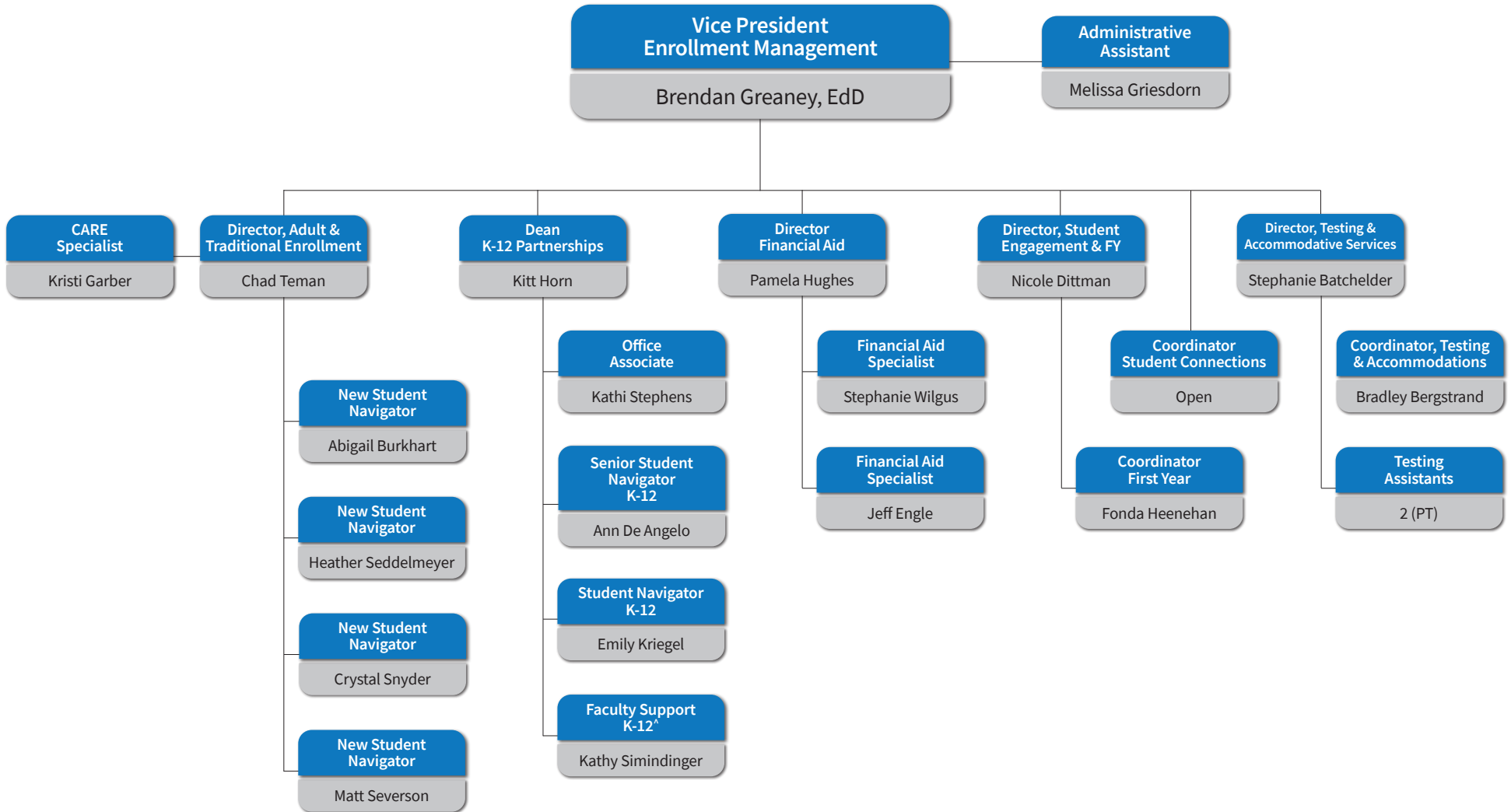


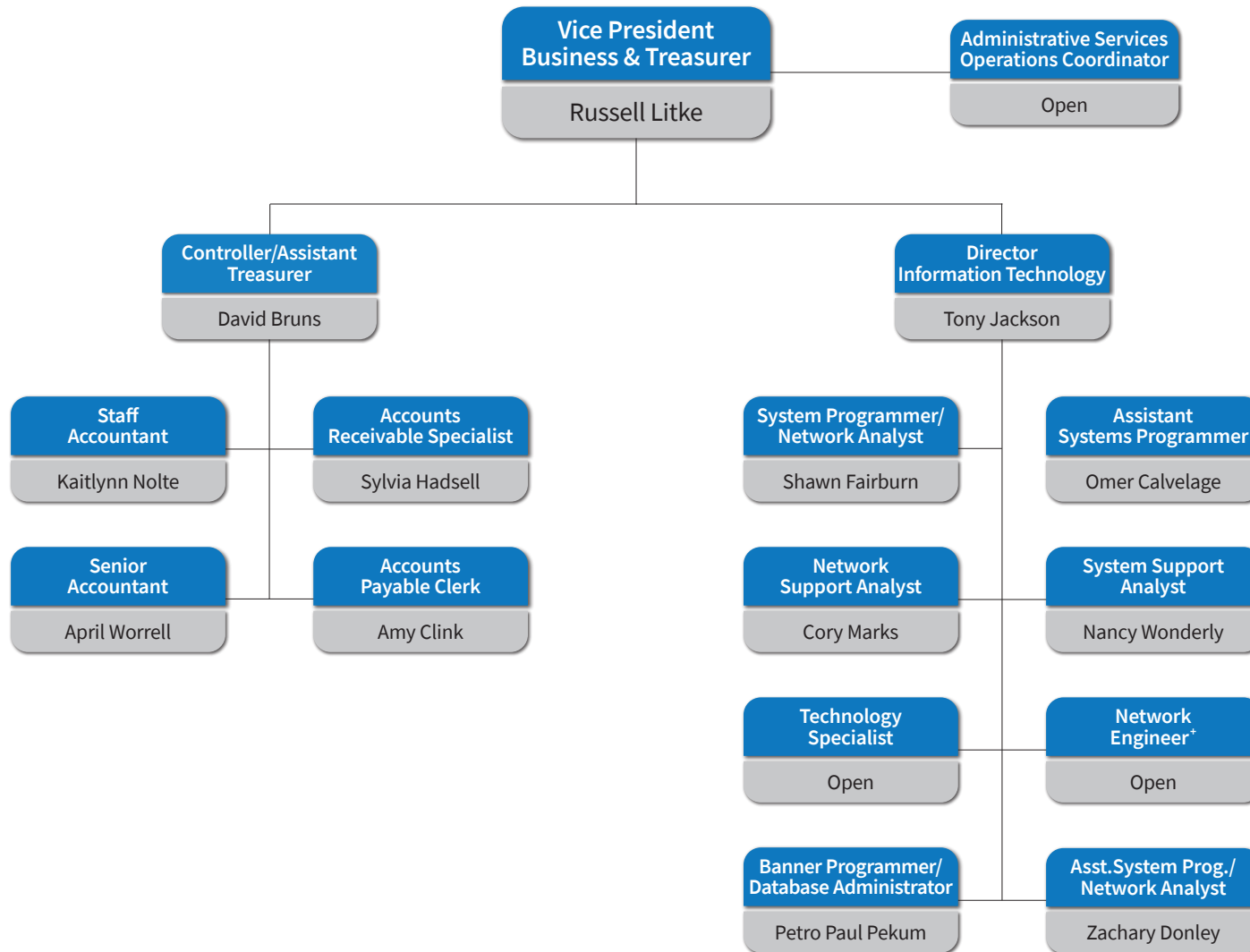
*.75 FTE
^ .5 FTE
.49 FTE

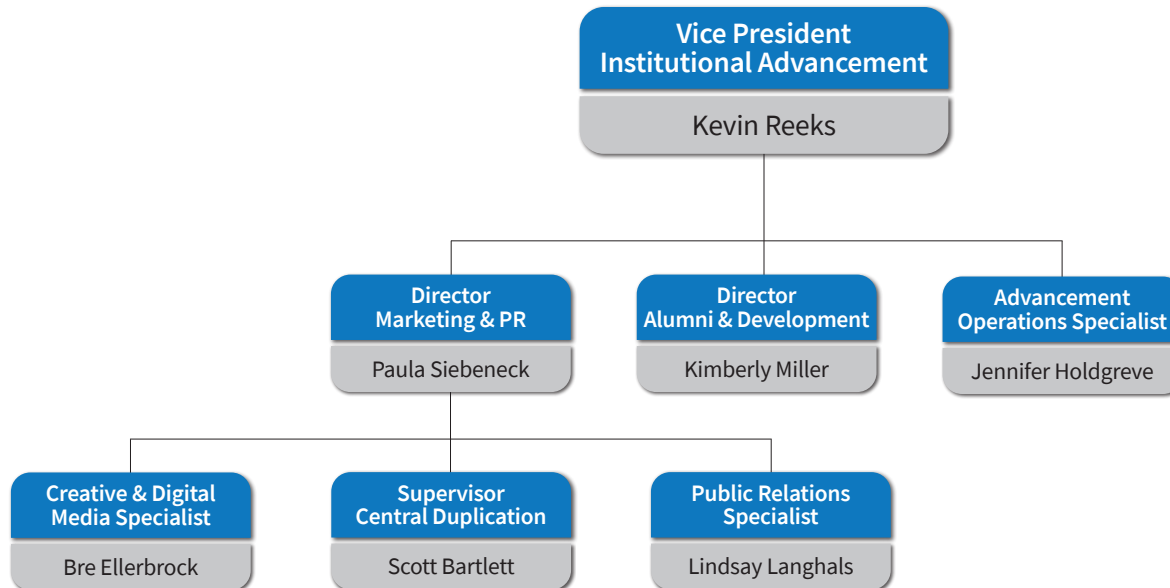
TECHNOLOGY AND LIBERAL STUDIES



ENROLLMENT MANAGEMENT







INSTITUTIONAL EFFECTIVENESS PLANNING

